



ELECTRONIC COPY

LG732589959 Report verification at igi.org



September 9, 2025 IGI Report Number LG732589959 Description LABORATORY GROWN DIAMOND

Shape and Cutting Style CUT CORNERED RECTANGULAR MODIFIED BRILLIANT

Measurements 7.65 X 5.54 X 3.75 MM

GRADING RESULTS

Carat Weight 1.35 CARAT Color Grade D Clarity Grade VVS 1

September 9, 2025 IGI Report Number LG732589959 Description LABORATORY GROWN DIAMOND Shape and Cutting Style CUT CORNERED RECTANGULAR MODIFIED BRILLIANT Measurements 7.65 X 5.54 X 3.75 MM

GRADING RESULTS

Carat Weight 1.35 CARAT Color Grade D Clarity Grade VVS 1

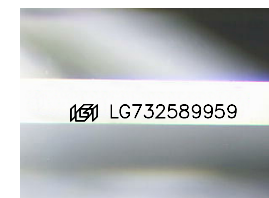
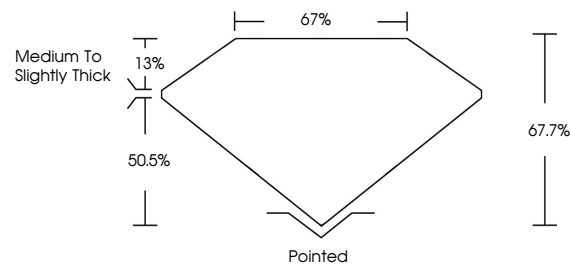
ADDITIONAL GRADING INFORMATION

Polish EXCELLENT Symmetry VERY GOOD Fluorescence NONE

Inscription(s) IGI LG732589959

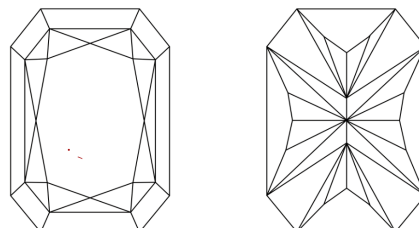
Comments: This Laboratory Grown Diamond was created by Chemical Vapor Deposition (CVD) growth process. Type IIa

PROPORTIONS



Sample Image Used

CLARITY CHARACTERISTICS



KEY TO SYMBOLS

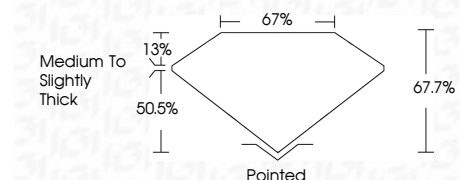
Red symbols indicate internal characteristics. Green symbols indicate external characteristics.

COLOR

D E F G H I J Faint Very Light Light

CLARITY

IF WS 1-2 VS 1-2 SI 1-2 I 1-3 Internally Flawless Very Very Slightly Included Very Slightly Included Slightly Included Included



ADDITIONAL GRADING INFORMATION

Polish EXCELLENT Symmetry VERY GOOD Fluorescence NONE Inscription(s) IGI LG732589959

Comments: This Laboratory Grown Diamond was created by Chemical Vapor Deposition (CVD) growth process. Type IIa



September 9, 2025 IGI Report No LG732589959 CUT CORNERED RECT. MODIFIED BRILLIANT 1.35 CARAT D VVS 1 7.65 X 5.54 X 3.75 MM Medium to Slightly Thick Pointed EXCELLENT VERY GOOD NONE IGI LG732589959 Comments: This Laboratory Grown Diamond was created by Chemical Vapor Deposition (CVD) growth process. Type IIa