



ELECTRONIC COPY

LABORATORY GROWN DIAMOND REPORT

September 17, 2025	
IGI Report Number	LG732583939
Description	LABORATORY GROWN DIAMOND
Shape and Cutting Style	ROUND BRILLIANT
Measurements	11.02 - 11.08 X 6.54 MM

GRADING RESULTS

Carat Weight	5.00 CARATS
Color Grade	F
Clarity Grade	VVS 2
Cut Grade	EXCELLENT

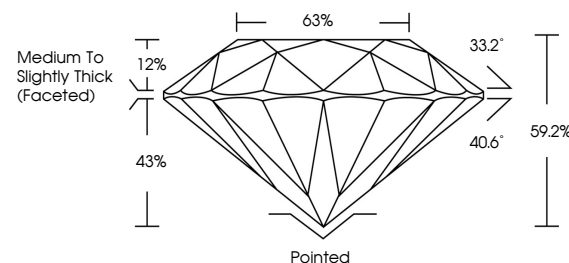
ADDITIONAL GRADING INFORMATION

Polish	EXCELLENT
Symmetry	EXCELLENT
Fluorescence	NONE
Inscription(s)	 LG732583939

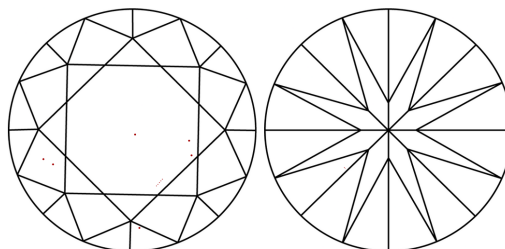
Comments: This Laboratory Grown Diamond was created by Chemical Vapor Deposition (CVD) growth process.
Type IIa

LG732583939
Report verification at igi.org

PROPORTIONS

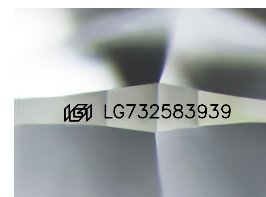


CLARITY CHARACTERISTICS



KEY TO SYMBOLS

Red symbols indicate internal characteristics.
Green symbols indicate external characteristics.



Sample Image Used

COLOR

D E F G H I J Faint Very Light Light

CLARITY

IF WS¹⁻² VS¹⁻² SI¹⁻² |¹⁻³

Internally Flawless	Very Very Slightly Included	Very Slightly Included	Slightly Included	Included
------------------------	--------------------------------	---------------------------	----------------------	----------

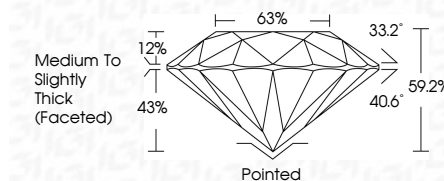
LABORATORY GROWN DIAMOND REPORT



September 17, 2025	
IGI Report Number	LG732583939
Description	LABORATORY GROWN DIAMOND
Shape and Cutting Style	ROUND BRILLIANT
Measurements	11.02 - 11.08 X 6.54 MM

GRADING RESULTS

Carat Weight	5.00 CARATS
Color Grade	F
Clarity Grade	VVS 2
Cut Grade	EXCELLENT



ADDITIONAL GRADING INFORMATION

Polish	EXCELLENT
Symmetry	EXCELLENT
Fluorescence	NONE
Inscription(s)	IGI LG732583939
Comments: This Laboratory Grown Diamond was created by Chemical Vapor Deposition (CVD) growth process.	
Type IIa	



© IGI 2020, International Gemological Institute

FD - 10 20



THIS DOCUMENT WAS PRODUCED WITH THE FOLLOWING SECURITY MEASURES: SPECIAL DOCUMENT PAPER, INK SCREENS, WATERMARK, BACKGROUND DESIGNS, HOLOGRAM AND OTHER SECURITY FEATURES NOT LISTED AND DO EXCEED DOCUMENT SECURITY INDUSTRY GUIDELINE

www.igi.org

September 17, 2025
IGI Report No LG732583939
ROUND BRILLIANT

ROUND BRILLIANT	11.02 - 11.08 X 6.64 MM	5.00 CARATS	
Color Grade	Carat Weight	F	
Clarity Grade	VVS 2	EXCELLENT	
Cut Grade	Depth	69.2%	
Table	65%		
Grade	Medium to Slightly Thick (Faceted)		
Culet	Polished		
Polish	EXCELLENT		
Symmetry	EXCELLENT		
Fluorescence	NONE		

Comments:
This Laboratory Grown Diamond was created by Chemical Vapor Deposition (CVD) growth process.