



ELECTRONIC COPY

LABORATORY GROWN DIAMOND REPORT

LG732571502
Report verification at igi.org

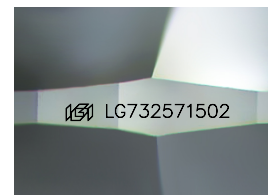
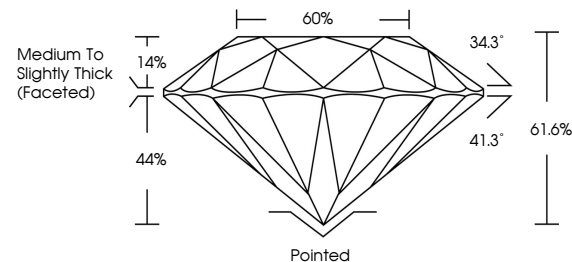
| | |
|-------------------------|--------------------------|
| September 7, 2025 | |
| IGI Report Number | LG732571502 |
| Description | LABORATORY GROWN DIAMOND |
| Shape and Cutting Style | ROUND BRILLIANT |
| Measurements | 10.98 - 11.05 X 6.78 MM |
| GRADING RESULTS | |
| Carat Weight | 5.10 CARATS |
| Color Grade | F |
| Clarity Grade | VVS 1 |
| Cut Grade | IDEAL |

ADDITIONAL GRADING INFORMATION

| | |
|----------------|-----------------|
| Polish | EXCELLENT |
| Symmetry | EXCELLENT |
| Fluorescence | NONE |
| Inscription(s) | 151 LG732571502 |

Comments: This Laboratory Grown Diamond was created by Chemical Vapor Deposition (CVD) growth process.
Type IIa

PROPORTIONS



Sample Image Used

COLOR

D E F G H I J Faint Very Light Light

CLARITY

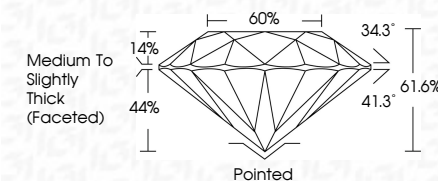
IF VS¹⁻² VS¹⁻² S¹⁻² |¹⁻³

| Internally Flawless | Very Very Slightly Included | Very Slightly Included | Slightly Included | Included |
|------------------------|--------------------------------|---------------------------|----------------------|----------|
|------------------------|--------------------------------|---------------------------|----------------------|----------|

LABORATORY GROWN DIAMOND REPORT



| | |
|-------------------------|--------------------------|
| September 7, 2025 | |
| IGI Report Number | LG732571502 |
| Description | LABORATORY GROWN DIAMOND |
| Shape and Cutting Style | ROUND BRILLIANT |
| Measurements | 10.98 - 11.05 X 6.78 MM |
| GRADING RESULTS | |
| Carat Weight | 5.10 CARATS |
| Color Grade | F |
| Clarity Grade | VVS1 |
| Cut Grade | IDEAL |



ADDITIONAL GRADING INFORMATION

| | |
|--|---------------------------|
| Polish | EXCELLENT |
| Symmetry | EXCELLENT |
| Fluorescence | NONE |
| Inscription(s) | LG LG732571502 |
| Comments: This Laboratory Grown Diamond was created by Chemical Vapor Deposition (CVD) growth process. | |
| Type IIa | |



© IGI 2020, International Gemological Institute

FD - 10 20



THIS DOCUMENT WAS PRODUCED WITH THE FOLLOWING SECURITY MEASURES: SPECIAL DOCUMENT PAPER, INK SCREENS, WATERMARK, BACKGROUND DESIGNS, HOLOGRAM AND OTHER SECURITY FEATURES NOT LISTED AND DO EXCEED DOCUMENT SECURITY INDUSTRY GUIDELINES

www.igi.org

September 7, 2025
IGI Report No LG732571502
ROUND BRILLIANT

| | | |
|-------------------------|---------------|------------------------------------|
| 10.98 - 11.05 x 6.78 MM | Carat Weight | 5.10 CARATS |
| | Color Grade | F |
| | Clarity Grade | VS 1 |
| | Cut Grade | IDEAL |
| | Depth | 61.6% |
| | Table | 60% |
| | Girdle | Medium to Slightly Thick (Faceted) |
| | Culet | Pointed |
| | Polish | EXCELLENT |
| | Symmetry | EXCELLENT |
| | Fluorescence | NONE |

Comments:
This Laboratory Grown Diamond was created by Chemical Vapor Deposition (CVD) growth process.