



ELECTRONIC COPY

LG732571415
Report verification at igi.org



September 8, 2025
IGI Report Number LG732571415
Description LABORATORY GROWN DIAMOND
Shape and Cutting Style CUT CORNERED SQUARE MIXED CUT
Measurements 8.01 X 8.00 X 5.60 MM
GRADING RESULTS
Carat Weight 3.22 CARATS
Color Grade E
Clarity Grade VVS 2

LABORATORY GROWN DIAMOND REPORT

September 8, 2025
IGI Report Number LG732571415
Description LABORATORY GROWN DIAMOND
Shape and Cutting Style CUT CORNERED SQUARE MIXED CUT
Measurements 8.01 X 8.00 X 5.60 MM

GRADING RESULTS

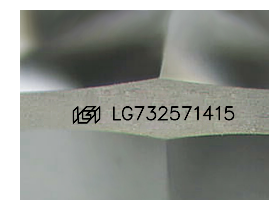
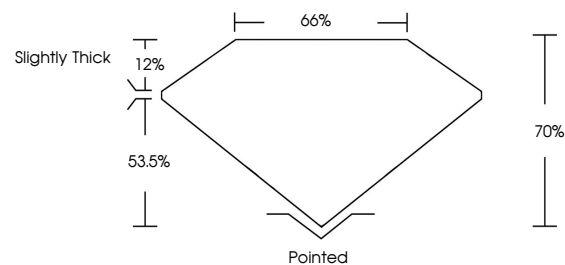
Carat Weight 3.22 CARATS
Color Grade E
Clarity Grade VVS 2

ADDITIONAL GRADING INFORMATION

Polish EXCELLENT
Symmetry EXCELLENT
Fluorescence NONE
Inscription(s) IGI LG732571415

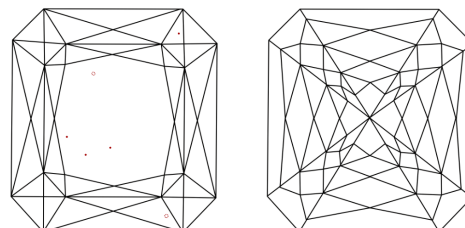
Comments: This Laboratory Grown Diamond was created by Chemical Vapor Deposition (CVD) growth process. Type IIa

PROPORTIONS



Sample Image Used

CLARITY CHARACTERISTICS



KEY TO SYMBOLS

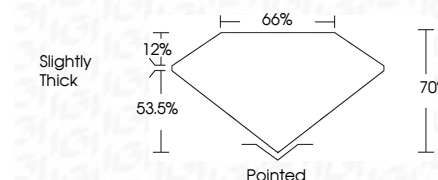
Red symbols indicate internal characteristics.
Green symbols indicate external characteristics.

COLOR

D E F G H I J Faint Very Light Light

CLARITY

IF WS 1-2 VS 1-2 SI 1-2 I 1-3
Internally Flawless Very Very Slightly Included Very Slightly Included Slightly Included Included



ADDITIONAL GRADING INFORMATION

Polish EXCELLENT
Symmetry EXCELLENT
Fluorescence NONE
Inscription(s) IGI LG732571415
Comments: This Laboratory Grown Diamond was created by Chemical Vapor Deposition (CVD) growth process. Type IIa



September 8, 2025
IGI Report No LG732571415
CUT CORNERED SQUARE MIXED CUT
3.22 CARATS E
8.01 X 8.00 X 5.60 MM
Carat Weight 3.22 CARATS
Color Grade E
Clarity Grade VVS 2
Depth 70%
Table 53.5%
Girdle Slightly Thick
Culet Pointed
Polish EXCELLENT
Symmetry EXCELLENT
Fluorescence NONE
Inscription(s) IGI LG732571415
Comments: This Laboratory Grown Diamond was created by Chemical Vapor Deposition (CVD) growth process. Type IIa