



**ELECTRONIC COPY**

LG732565631  
Report verification at igi.org



September 19, 2025

IGI Report Number **LG732565631**

Description **LABORATORY GROWN DIAMOND**

Shape and Cutting Style **CUSHION MIXED CUT**

Measurements **6.79 X 5.05 X 3.38 MM**

**GRADING RESULTS**

Carat Weight **1.07 CARAT**

Color Grade **FANCY VIVID BLUE**

Clarity Grade **VVS 2**

**LABORATORY GROWN DIAMOND REPORT**

September 19, 2025

IGI Report Number **LG732565631**

Description **LABORATORY GROWN DIAMOND**

Shape and Cutting Style **CUSHION MIXED CUT**

Measurements **6.79 X 5.05 X 3.38 MM**

**GRADING RESULTS**

Carat Weight **1.07 CARAT**

Color Grade **FANCY VIVID BLUE**

Clarity Grade **VVS 2**

**ADDITIONAL GRADING INFORMATION**

Polish **EXCELLENT**

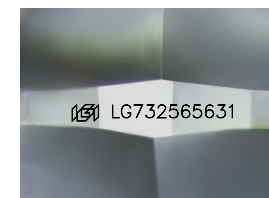
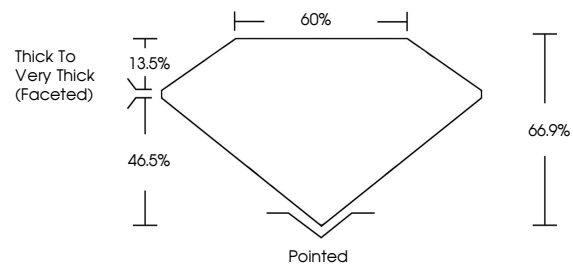
Symmetry **EXCELLENT**

Fluorescence **NONE**

Inscription(s) **IGI LG732565631**

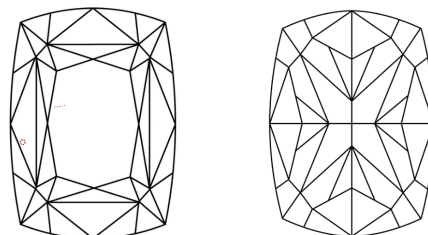
Comments: This Laboratory Grown Diamond was created by Chemical Vapor Deposition (CVD) growth process. Indications of post-growth treatment.

**PROPORTIONS**



Sample Image Used

**CLARITY CHARACTERISTICS**



**KEY TO SYMBOLS**

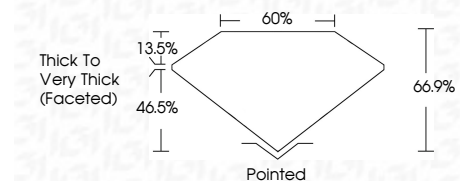
Red symbols indicate internal characteristics.  
Green symbols indicate external characteristics.

**COLOR**

D E F G H I J Faint Very Light Light

**CLARITY**

IF	VS <sup>1-2</sup>	VS <sup>1-2</sup>	SI <sup>1-2</sup>	I <sup>1-3</sup>
Internally Flawless	Very Very Slightly Included	Very Slightly Included	Slightly Included	Included



**ADDITIONAL GRADING INFORMATION**

Polish **EXCELLENT**

Symmetry **EXCELLENT**

Fluorescence **NONE**

Inscription(s) **IGI LG732565631**

Comments: This Laboratory Grown Diamond was created by Chemical Vapor Deposition (CVD) growth process. Indications of post-growth treatment.



**IGI**



September 19, 2025  
IGI Report No LG732565631  
CUSHION MIXED CUT

1.07 CARAT  
FANCY VIVID BLUE  
VVS 2  
66.9%  
60%

6.79 X 5.05 X 3.38 MM  
Color Grade  
Clarity Grade  
Table  
Girdle  
Thick to Very Thick (Faceted)

Pointed  
EXCELLENT  
EXCELLENT  
NONE  
IGI LG732565631

Comments: This Laboratory Grown Diamond was created by Chemical Vapor Deposition (CVD) growth process. Indications of post-growth treatment.