



**ELECTRONIC COPY**

LG732565355  
Report verification at igi.org



September 18, 2025

IGI Report Number **LG732565355**

Description **LABORATORY GROWN DIAMOND**

Shape and Cutting Style **SQUARE EMERALD CUT**

Measurements **8.55 X 8.29 X 5.81 MM**

**GRADING RESULTS**

Carat Weight **4.06 CARATS**

Color Grade **FANCY INTENSE PINK**

Clarity Grade **SI 1**

September 18, 2025  
IGI Report Number **LG732565355**  
Description **LABORATORY GROWN DIAMOND**  
Shape and Cutting Style **SQUARE EMERALD CUT**  
Measurements **8.55 X 8.29 X 5.81 MM**

**GRADING RESULTS**

Carat Weight **4.06 CARATS**

Color Grade **FANCY INTENSE PINK**

Clarity Grade **SI 1**

**ADDITIONAL GRADING INFORMATION**

Polish **EXCELLENT**

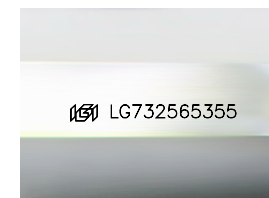
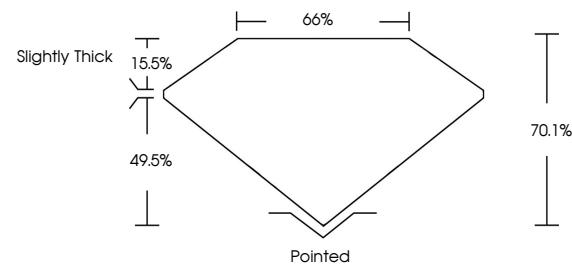
Symmetry **EXCELLENT**

Fluorescence **STRONG**

Inscription(s) **LG732565355**

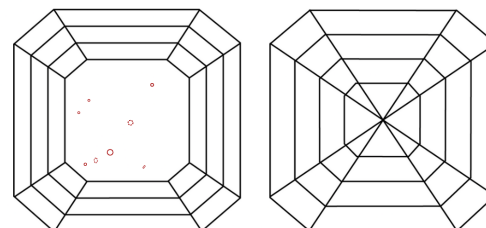
Comments: This Laboratory Grown Diamond was created by Chemical Vapor Deposition (CVD) growth process. Indications of post-growth treatment.

**PROPORTIONS**



Sample Image Used

**CLARITY CHARACTERISTICS**



**KEY TO SYMBOLS**

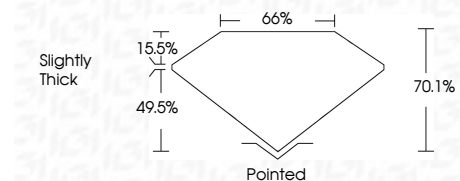
Red symbols indicate internal characteristics.  
Green symbols indicate external characteristics.

**COLOR**

D E F G H I J Faint Very Light Light

**CLARITY**

IF	VS <sup>1-2</sup>	VS <sup>1-2</sup>	SI <sup>1-2</sup>	I <sup>1-3</sup>
Internally Flawless	Very Very Slightly Included	Very Slightly Included	Slightly Included	Included



**ADDITIONAL GRADING INFORMATION**

Polish **EXCELLENT**

Symmetry **EXCELLENT**

Fluorescence **STRONG**

Inscription(s) **LG732565355**

Comments: This Laboratory Grown Diamond was created by Chemical Vapor Deposition (CVD) growth process. Indications of post-growth treatment.



**IGI**



September 18, 2025  
IGI Report No LG732565355  
**SQUARE EMERALD CUT**  
**4.06 CARATS**  
**FANCY INTENSE PINK**  
Carat Weight  
Color Grade  
Clarity Grade **SI 1**  
Depth **70.1%**  
Table **66%**  
Girdle **Slightly Thick**  
Culet **Pointed**  
Polish **EXCELLENT**  
Symmetry **EXCELLENT**  
Fluorescence **STRONG**  
Inscription(s) **LG732565355**

Comments: This Laboratory Grown Diamond was created by Chemical Vapor Deposition (CVD) growth process. Indications of post-growth treatment.