



ELECTRONIC COPY

LG732564610
Report verification at igi.org



September 26, 2025

IGI Report Number **LG732564610**

Description **LABORATORY GROWN DIAMOND**

Shape and Cutting Style **EMERALD CUT**

Measurements **11.21 X 7.30 X 4.62 MM**

GRADING RESULTS

Carat Weight **4.03 CARATS**

Color Grade **FANCY VIVID GREEN**

Clarity Grade **VS 1**

September 26, 2025
IGI Report Number **LG732564610**
Description **LABORATORY GROWN DIAMOND**
Shape and Cutting Style **EMERALD CUT**
Measurements **11.21 X 7.30 X 4.62 MM**

GRADING RESULTS

Carat Weight **4.03 CARATS**

Color Grade **FANCY VIVID GREEN**

Clarity Grade **VS 1**

ADDITIONAL GRADING INFORMATION

Polish **EXCELLENT**

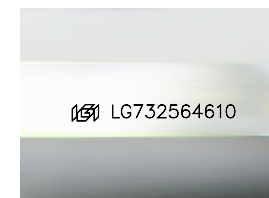
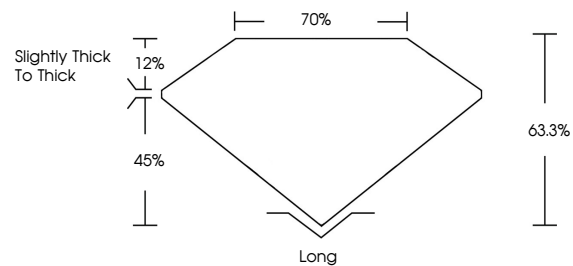
Symmetry **EXCELLENT**

Fluorescence **NONE**

Inscription(s) **IGI LG732564610**

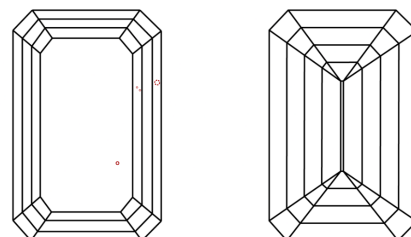
Comments: This Laboratory Grown Diamond was created by Chemical Vapor Deposition (CVD) growth process. Indications of post-growth treatment.

PROPORTIONS



Sample Image Used

CLARITY CHARACTERISTICS



KEY TO SYMBOLS

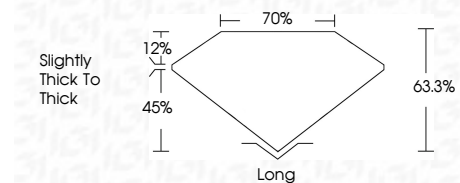
Red symbols indicate internal characteristics.
Green symbols indicate external characteristics.

COLOR

D E F G H I J Faint Very Light Light

CLARITY

IF	VS ¹⁻²	VS ¹⁻²	SI ¹⁻²	I ¹⁻³
Internally Flawless	Very Very Slightly Included	Very Slightly Included	Slightly Included	Included



ADDITIONAL GRADING INFORMATION

Polish **EXCELLENT**

Symmetry **EXCELLENT**

Fluorescence **NONE**

Inscription(s) **IGI LG732564610**

Comments: This Laboratory Grown Diamond was created by Chemical Vapor Deposition (CVD) growth process. Indications of post-growth treatment.



IGI



September 26, 2025	4.03 CARATS	Long
IGI Report No LG732564610	FANCY VIVID GREEN	EXCELLENT
EMERALD CUT	VS 1	EXCELLENT
11.21 X 7.30 X 4.62 MM	63.3%	NONE
Carat Weight	70%	IGI LG732564610
Color Grade	Slightly Thick To Thick	
Clarity Grade		
Depth		
Table		
Grailes		
Culet		
Polish		
Symmetry		
Fluorescence		
Inscription(s)		

Comments: This Laboratory Grown Diamond was created by Chemical Vapor Deposition (CVD) growth process. Indications of post-growth treatment.