



LABORATORY GROWN DIAMOND REPORT

September 16, 2025
 IGI Report Number **LG732561492**
 Description **LABORATORY GROWN DIAMOND**
 Shape and Cutting Style **FREEFORM**
 Measurements **6.53 X 5.28 X 3.18 MM**

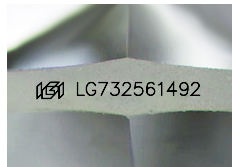
GRADING RESULTS

Carat Weight **0.62 CARAT**
 Color Grade **G**
 Clarity Grade **VS 1**

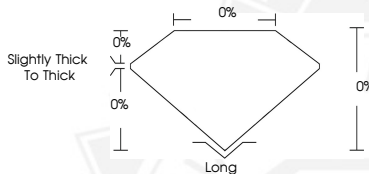
ADDITIONAL GRADING INFORMATION

Polish **VERY GOOD**
 Symmetry **VERY GOOD**
 Fluorescence **NONE**
 Inscription(s) **IGI LG732561492**

Comments: This Laboratory Grown Diamond was created by Chemical Vapor Deposition (CVD) growth process. Type IIa



Sample Image Used



September 16, 2025
 IGI Report Number **LG732561492**
FREEFORM
LABORATORY GROWN DIAMOND
6.53 X 5.28 X 3.18 MM
 Carat Weight **0.62 CARAT**
 Color Grade **G**
 Clarity Grade **VS 1**
 Polish **VERY GOOD**
 Symmetry **VERY GOOD**
 Fluorescence **NONE**
 Inscription(s) **IGI LG732561492**

Comments: This Laboratory Grown Diamond was created by Chemical Vapor Deposition (CVD) growth process. Type IIa



September 16, 2025
 IGI Report Number **LG732561492**
FREEFORM
LABORATORY GROWN DIAMOND
6.53 X 5.28 X 3.18 MM
 Carat Weight **0.62 CARAT**
 Color Grade **G**
 Clarity Grade **VS 1**
 Polish **VERY GOOD**
 Symmetry **VERY GOOD**
 Fluorescence **NONE**
 Inscription(s) **IGI LG732561492**

Comments: This Laboratory Grown Diamond was created by Chemical Vapor Deposition (CVD) growth process. Type IIa



THIS DOCUMENT WAS PRODUCED WITH THE FOLLOWING SECURITY MEASURES: SPECIAL DOCUMENT PAPER, INK SCREENS, WATERMARK, BACKGROUND DESIGNS, HOLOGRAM AND OTHER SECURITY FEATURES NOT LISTED AND DO EXCEED DOCUMENT SECURITY INDUSTRY GUIDELINES.