



**ELECTRONIC COPY**

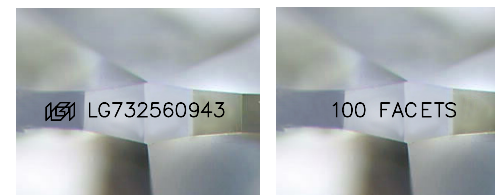
LG732560943  
Report verification at igi.org



September 30, 2025  
IGI Report Number **LG732560943**  
Description **LABORATORY GROWN DIAMOND**  
Shape and Cutting Style **HEART MODIFIED BRILLIANT**  
Measurements **9.57 X 10.46 X 6.11 MM**

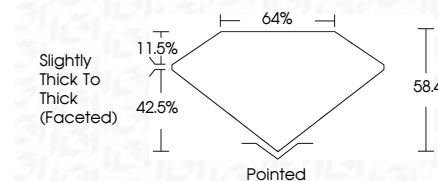
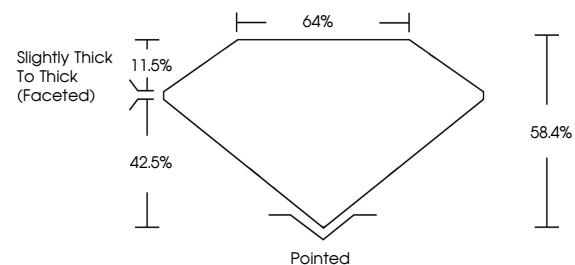
**GRADING RESULTS**

Carat Weight **3.54 CARATS**  
Color Grade **G**  
Clarity Grade **VS 1**



Sample Images Used

**PROPORTIONS**



September 30, 2025  
IGI Report Number **LG732560943**  
Description **LABORATORY GROWN DIAMOND**  
Shape and Cutting Style **HEART MODIFIED BRILLIANT**  
Measurements **9.57 X 10.46 X 6.11 MM**  
**GRADING RESULTS**  
Carat Weight **3.54 CARATS**  
Color Grade **G**  
Clarity Grade **VS 1**

**ADDITIONAL GRADING INFORMATION**

Polish **EXCELLENT**  
Symmetry **EXCELLENT**  
Fluorescence **NONE**  
Inscription(s) **IGI LG732560943  
100 FACETS**

Comments: This Laboratory Grown Diamond was created by Chemical Vapor Deposition (CVD) growth process. Type IIa

**COLOR**

D E F G H I J Faint Very Light Light

**CLARITY**

FL IF VS<sup>1-2</sup> VS<sup>1-2</sup> SI<sup>1-2</sup> I<sup>1-3</sup>

Flawless Internally Flawless Very Very Slightly Included Very Slightly Included Slightly Included Included

**ADDITIONAL GRADING INFORMATION**

Polish **EXCELLENT**  
Symmetry **EXCELLENT**  
Fluorescence **NONE**  
Inscription(s) **IGI LG732560943  
100 FACETS**

Comments: This Laboratory Grown Diamond was created by Chemical Vapor Deposition (CVD) growth process. Type IIa



**IGI**



September 30, 2025  
IGI Report No LG732560943  
**HEART MODIFIED BRILLIANT**  
9.57 X 10.46 X 6.11 MM  
Carat Weight **3.54 CARATS**  
Color Grade **G**  
Clarity Grade **VS 1**  
Depth **64%**  
Table **64%**  
Girdle **Slightly Thick To Thick (Faceted)**  
Culet **Pointed**  
Polish **EXCELLENT**  
Symmetry **EXCELLENT**  
Fluorescence **NONE**  
Inscription(s) **IGI LG732560943 100 FACETS**  
Comments: This Laboratory Grown Diamond was created by Chemical Vapor Deposition (CVD) growth process. Type IIa