



ELECTRONIC COPY

LABORATORY GROWN DIAMOND REPORT

LG732560332
Report verification at igi.org

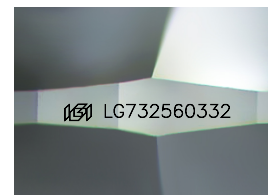
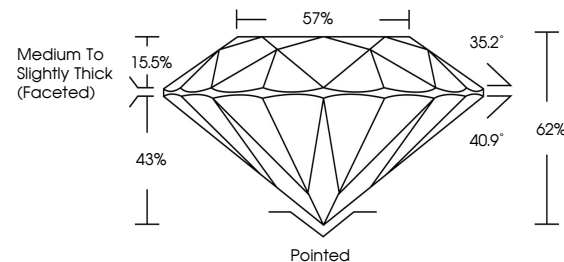
| | |
|-------------------------|--------------------------|
| September 12, 2025 | |
| IGI Report Number | LG732560332 |
| Description | LABORATORY GROWN DIAMOND |
| Shape and Cutting Style | ROUND BRILLIANT |
| Measurements | 7.41 - 7.46 X 4.61 MM |
| GRADING RESULTS | |
| Carat Weight | 1.56 CARAT |
| Color Grade | FANCY VIVID PINK |
| Clarity Grade | SI 2 |
| Cut Grade | IDEAL |

ADDITIONAL GRADING INFORMATION

| | |
|----------------|----------------|
| Polish | EXCELLENT |
| Symmetry | EXCELLENT |
| Fluorescence | SLIGHT |
| Inscription(s) | 15 LG732560332 |

Comments: This Laboratory Grown Diamond was created by Chemical Vapor Deposition (CVD) growth process.
Indications of post-growth treatment.

PROPORTIONS



Sample Image Used

COLOR

D E F G H I J Faint Very Light Light

CLARITY

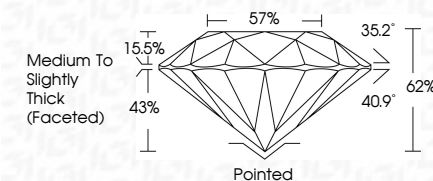
IF WS¹⁻² VS¹⁻² SI¹⁻² I¹⁻³

| | | | | |
|---------------------|-----------------------------|------------------------|-------------------|----------|
| Internally Flawless | Very Very Slightly Included | Very Slightly Included | Slightly Included | Included |
|---------------------|-----------------------------|------------------------|-------------------|----------|

LABORATORY GROWN DIAMOND REPORT



| | |
|-------------------------|--------------------------|
| September 12, 2025 | |
| IGI Report Number | LG732560332 |
| Description | LABORATORY GROWN DIAMOND |
| Shape and Cutting Style | ROUND BRILLIANT |
| Measurements | 7.41 - 7.46 X 4.61 MM |
| GRADING RESULTS | |
| Carat Weight | 1.56 CARAT |
| Color Grade | FANCY VIVID PINK |
| Clarity Grade | SI 2 |
| Cut Grade | IDEAL |



ADDITIONAL GRADING INFORMATION

| | |
|--|---------------------------|
| Polish | EXCELLENT |
| Symmetry | EXCELLENT |
| Fluorescence | SLIGHT |
| Inscription(s) | LG LG732560332 |
| <p>Comments: This Laboratory Grown Diamond was created by Chemical Vapor Deposition (CVD) growth process.</p> <p>Indications of post-growth treatment.</p> | |



© IGI 2020, International Gemological Institute

FD - 10 20



THIS DOCUMENT WAS PRODUCED WITH THE FOLLOWING SECURITY MEASURES: SPECIAL DOCUMENT PAPER, INK SCREENS, WATERMARK, BACKGROUND DESIGNS, HOLOGRAM AND OTHER SECURITY FEATURES NOT LISTED AND DO EXCEED DOCUMENT SECURITY INDUSTRY GUIDELINES

www.igi.org

September 12, 2025
 IGI Report No LG732560332
 ROUND BRILLIANT

7.41 - 7.46 X 4.61 MM

7.41 - 7.46 X 4.61 MM
Carat Weight 1.56 CARAT

Color Grade

| | |
|---------------|------|
| Clarity Grade | SI 2 |
|---------------|------|

| | |
|-----------|-------|
| Cut Grade | IDEAL |
| Depth | 62% |

| | |
|-------|-----|
| Depth | 82% |
| Table | 57% |

Girdle
Medium To Slightly
Thick (Faceted)

| Culet | Pointed | Thick (Faceted) |
|-------|---------|-----------------|
|-------|---------|-----------------|

| | Pointed | EXCELLENT |
|--------|---------|-----------|
| Culet | | |
| Polish | | |

Symmetry

| Fluorescence | SIGHT |
|----------------|-----------------|
| Inscription(s) | 191 LG732560332 |

| Comments: | Description(s) | 7/20/2015 |
|-----------|----------------|-----------|
| | | 7/20/2015 |

Comments:
This Laboratory Grown Diamond was
certified by Chemical Vapor Deposition

created by Chemical Vapor Deposition (CVD) growth process.

indications of post-growth treatment.