



**ELECTRONIC COPY**

LG732559426  
Report verification at igi.org



September 12, 2025

IGI Report Number **LG732559426**

Description **LABORATORY GROWN DIAMOND**

Shape and Cutting Style **HEXAGONAL MIXED CUT**

Measurements **6.51 X 5.65 X 4.24 MM**

**GRADING RESULTS**

Carat Weight **1.06 CARAT**

Color Grade **FANCY VIVID PINK**

Clarity Grade **VS 1**

**LABORATORY GROWN DIAMOND REPORT**

September 12, 2025

IGI Report Number **LG732559426**

Description **LABORATORY GROWN DIAMOND**

Shape and Cutting Style **HEXAGONAL MIXED CUT**

Measurements **6.51 X 5.65 X 4.24 MM**

**GRADING RESULTS**

Carat Weight **1.06 CARAT**

Color Grade **FANCY VIVID PINK**

Clarity Grade **VS 1**

**ADDITIONAL GRADING INFORMATION**

Polish **VERY GOOD**

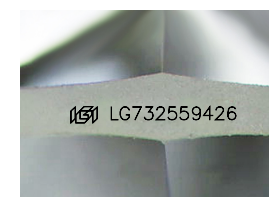
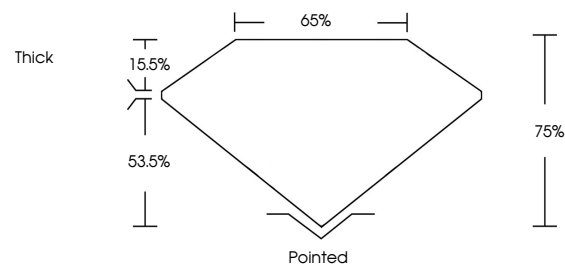
Symmetry **VERY GOOD**

Fluorescence **STRONG**

Inscription(s) **IGI LG732559426**

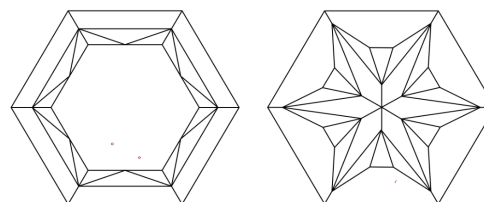
Comments: This Laboratory Grown Diamond was created by Chemical Vapor Deposition (CVD) growth process. Indications of post-growth treatment.

**PROPORTIONS**



Sample Image Used

**CLARITY CHARACTERISTICS**



**KEY TO SYMBOLS**

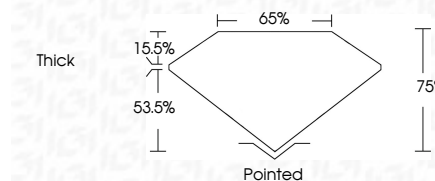
Red symbols indicate internal characteristics.  
Green symbols indicate external characteristics.

**COLOR**

D E F G H I J Faint Very Light Light

**CLARITY**

IF	VS <sup>1-2</sup>	VS <sup>1-2</sup>	SI <sup>1-2</sup>	I <sup>1-3</sup>
Internally Flawless	Very Very Slightly Included	Very Slightly Included	Slightly Included	Included



**ADDITIONAL GRADING INFORMATION**

Polish **VERY GOOD**

Symmetry **VERY GOOD**

Fluorescence **STRONG**

Inscription(s) **IGI LG732559426**

Comments: This Laboratory Grown Diamond was created by Chemical Vapor Deposition (CVD) growth process. Indications of post-growth treatment.



September 12, 2025	1.06 CARAT	Polished
IGI Report No LG732559426	FANCY VIVID PINK	VERY GOOD
HEXAGONAL MIXED CUT	VS 1	VERY GOOD
6.51 X 5.65 X 4.24 MM	75%	STRONG
Color Grade	65%	Inscription(s)
Clarity Grade	Thick	IGI LG732559426
Depth		
Table		
Girdle		
Culet		
Polish		
Symmetry		
Fluorescence		
Inscription(s)		

Comments: This Laboratory Grown Diamond was created by Chemical Vapor Deposition (CVD) growth process. Indications of post-growth treatment.