



**ELECTRONIC COPY**

LG732559415  
Report verification at igi.org



September 12, 2025

IGI Report Number **LG732559415**

Description **LABORATORY GROWN DIAMOND**

Shape and Cutting Style **ROUND BRILLIANT**

Measurements **6.60 - 6.62 X 3.99 MM**

**GRADING RESULTS**

Carat Weight **1.08 CARAT**

Color Grade **FANCY INTENSE PINK**

Clarity Grade **VVS 2**

Cut Grade **IDEAL**

September 12, 2025  
IGI Report Number **LG732559415**  
Description **LABORATORY GROWN DIAMOND**  
Shape and Cutting Style **ROUND BRILLIANT**  
Measurements **6.60 - 6.62 X 3.99 MM**

**GRADING RESULTS**

Carat Weight **1.08 CARAT**

Color Grade **FANCY INTENSE PINK**

Clarity Grade **VVS 2**

Cut Grade **IDEAL**

**ADDITIONAL GRADING INFORMATION**

Polish **EXCELLENT**

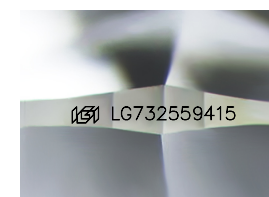
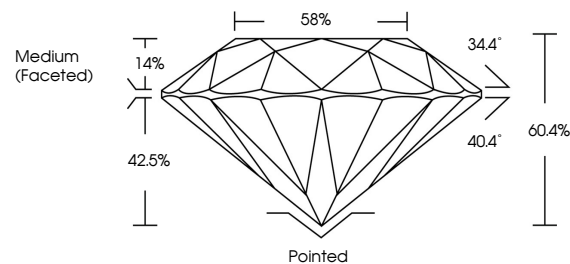
Symmetry **EXCELLENT**

Fluorescence **SLIGHT**

Inscription(s) **LG732559415**

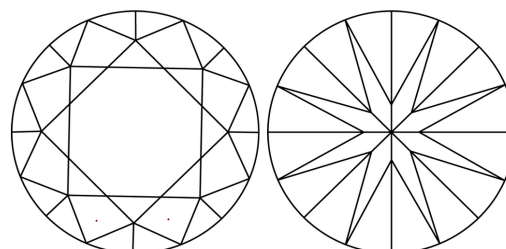
Comments: This Laboratory Grown Diamond was created by Chemical Vapor Deposition (CVD) growth process.  
Indications of post-growth treatment.

**PROPORTIONS**



Sample Image Used

**CLARITY CHARACTERISTICS**



**KEY TO SYMBOLS**

Red symbols indicate internal characteristics.  
Green symbols indicate external characteristics.

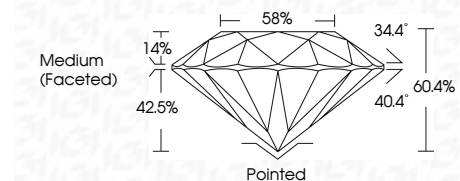
**COLOR**

D E F G H I J Faint Very Light Light

**CLARITY**

IF VVS<sup>1-2</sup> VS<sup>1-2</sup> SI<sup>1-2</sup> I<sup>1-3</sup>

Internally Flawless Very Very Slightly Included Very Slightly Included Slightly Included Included



**ADDITIONAL GRADING INFORMATION**

Polish **EXCELLENT**

Symmetry **EXCELLENT**

Fluorescence **SLIGHT**

Inscription(s) **LG732559415**

Comments: This Laboratory Grown Diamond was created by Chemical Vapor Deposition (CVD) growth process.  
Indications of post-growth treatment.



September 12, 2025	1.08 CARAT	Pointed
IGI Report No LG732559415	FANCY INTENSE PINK	EXCELLENT
ROUND BRILLIANT	VVS 2	EXCELLENT
6.60 - 6.62 X 3.99 MM	IDEAL	SLIGHT
Color Grade	60.4%	SLIGHT
Clarity Grade	58%	IGI LG732559415
Depth	Medium (Faceted)	
Table		
Grille		
Culet		
Polish		
Symmetry		
Fluorescence		
Inscription(s)		

Comments: This Laboratory Grown Diamond was created by Chemical Vapor Deposition (CVD) growth process.  
Indications of post-growth treatment.