



**ELECTRONIC COPY**

LG732558520  
Report verification at igi.org



September 5, 2025

IGI Report Number **LG732558520**

Description **LABORATORY GROWN DIAMOND**

Shape and Cutting Style **CUT CORNERED  
RECTANGULAR MODIFIED  
BRILLIANT**

Measurements **9.24 X 6.33 X 4.19 MM**

**GRADING RESULTS**

Carat Weight **2.10 CARATS**

Color Grade **F**

Clarity Grade **VS 1**

**LABORATORY GROWN DIAMOND REPORT**

September 5, 2025

IGI Report Number **LG732558520**

Description **LABORATORY GROWN DIAMOND**

Shape and Cutting Style **CUT CORNERED RECTANGULAR  
MODIFIED BRILLIANT**

Measurements **9.24 X 6.33 X 4.19 MM**

**GRADING RESULTS**

Carat Weight **2.10 CARATS**

Color Grade **F**

Clarity Grade **VS 1**

**ADDITIONAL GRADING INFORMATION**

Polish **EXCELLENT**

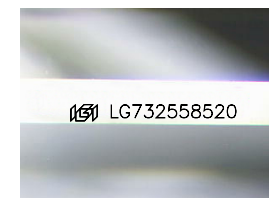
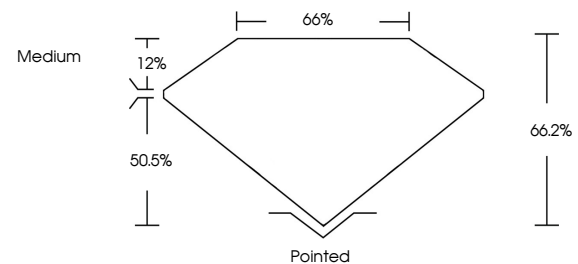
Symmetry **EXCELLENT**

Fluorescence **NONE**

Inscription(s) **IGI LG732558520**

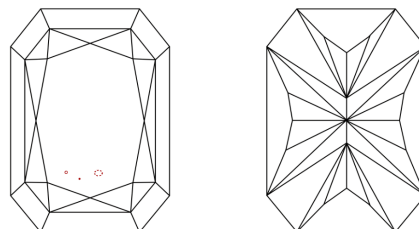
Comments: This Laboratory Grown Diamond was created by Chemical Vapor Deposition (CVD) growth process.  
Type IIa

**PROPORTIONS**



Sample Image Used

**CLARITY CHARACTERISTICS**



**KEY TO SYMBOLS**

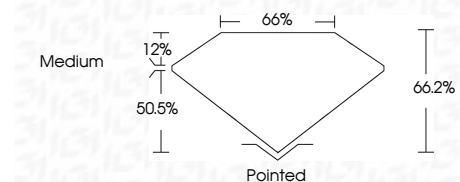
Red symbols indicate internal characteristics.  
Green symbols indicate external characteristics.

**COLOR**

D E F G H I J Faint Very Light Light

**CLARITY**

IF	VS <sup>1-2</sup>	VS <sup>1-2</sup>	SI <sup>1-2</sup>	I <sup>1-3</sup>
Internally Flawless	Very Very Slightly Included	Very Slightly Included	Slightly Included	Included



**ADDITIONAL GRADING INFORMATION**

Polish **EXCELLENT**

Symmetry **EXCELLENT**

Fluorescence **NONE**

Inscription(s) **IGI LG732558520**

Comments: This Laboratory Grown Diamond was created by Chemical Vapor Deposition (CVD) growth process.  
Type IIa



**IGI**



September 5, 2025  
IGI Report No LG732558520  
CUT CORNERED RECT. MODIFIED BRILLIANT  
9.24 X 6.33 X 4.19 MM  
2.10 CARATS  
F  
Color Grade  
VS 1  
Clarity Grade  
66.2%  
50.5%  
Depth  
Table  
Medium  
Girdle  
Pointed  
Culet  
EXCELLENT  
Polish  
EXCELLENT  
Symmetry  
NONE  
Fluorescence  
IGI LG732558520  
Inscription(s)

Comments: This Laboratory Grown Diamond was created by Chemical Vapor Deposition (CVD) growth process.  
Type IIa