



ELECTRONIC COPY

LG732554490
Report verification at igi.org



September 5, 2025
IGI Report Number **LG732554490**
Description **LABORATORY GROWN DIAMOND**
Shape and Cutting Style **SQUARE CUSHION MODIFIED
BRILLIANT**

Measurements **7.36 X 7.15 X 4.62 MM**

GRADING RESULTS

Carat Weight **2.17 CARATS**
Color Grade **D**
Clarity Grade **VVS 2**

September 5, 2025
IGI Report Number **LG732554490**
Description **LABORATORY GROWN DIAMOND**
Shape and Cutting Style **SQUARE CUSHION MODIFIED
BRILLIANT**
Measurements **7.36 X 7.15 X 4.62 MM**

GRADING RESULTS

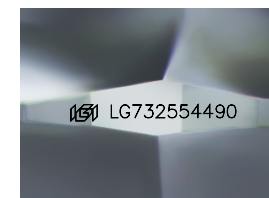
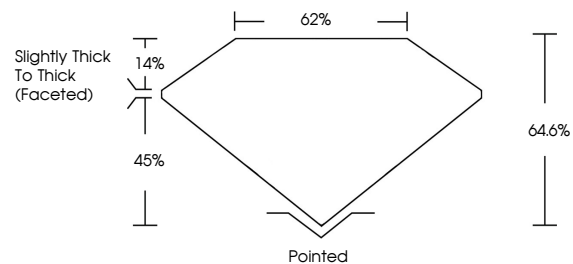
Carat Weight **2.17 CARATS**
Color Grade **D**
Clarity Grade **VVS 2**

ADDITIONAL GRADING INFORMATION

Polish **EXCELLENT**
Symmetry **EXCELLENT**
Fluorescence **NONE**
Inscription(s) **IGI LG732554490**

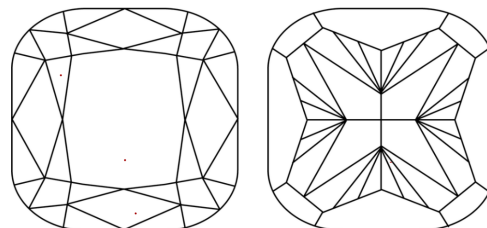
Comments: This Laboratory Grown Diamond was created by Chemical Vapor Deposition (CVD) growth process. Type IIa

PROPORTIONS



Sample Image Used

CLARITY CHARACTERISTICS



KEY TO SYMBOLS

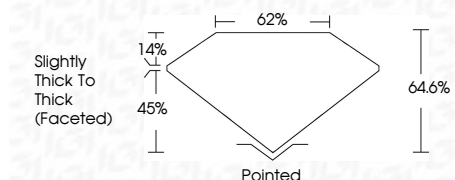
Red symbols indicate internal characteristics.
Green symbols indicate external characteristics.

COLOR

D E F G H I J Faint Very Light Light

CLARITY

IF	VS ¹⁻²	VS ¹⁻²	SI ¹⁻²	I ¹⁻³
Internally Flawless	Very Very Slightly Included	Very Slightly Included	Slightly Included	Included



ADDITIONAL GRADING INFORMATION

Polish **EXCELLENT**
Symmetry **EXCELLENT**
Fluorescence **NONE**
Inscription(s) **IGI LG732554490**
Comments: This Laboratory Grown Diamond was created by Chemical Vapor Deposition (CVD) growth process. Type IIa



IGI



September 5, 2025
IGI Report No LG732554490
SQUARE CUSHION MODIFIED BRILLIANT
7.36 X 7.15 X 4.62 MM
Carat Weight **2.17 CARATS**
Color Grade **D**
Clarity Grade **VVS 2**
Depth **64.6%**
Table **62%**
Girdle **Slightly Thick To Thick (Faceted)**
Culet **Pointed**
Polish **EXCELLENT**
Symmetry **EXCELLENT**
Fluorescence **NONE**
Inscription(s) **IGI LG732554490**

Comments: This Laboratory Grown Diamond was created by Chemical Vapor Deposition (CVD) growth process. Type IIa