



**ELECTRONIC COPY**

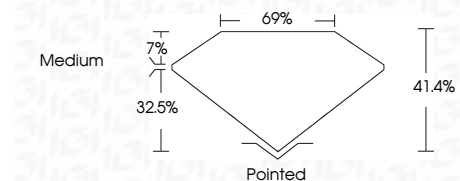
LG732552523  
Report verification at igi.org



September 9, 2025  
IGI Report Number **LG732552523**  
Description **LABORATORY GROWN DIAMOND**  
Shape and Cutting Style **TRIANGULAR MIXED CUT**  
Measurements **11.11 X 12.32 X 5.10 MM**

**GRADING RESULTS**

Carat Weight **2.87 CARATS**  
Color Grade **F**  
Clarity Grade **VVS 2**



**ADDITIONAL GRADING INFORMATION**

Polish **EXCELLENT**  
Symmetry **EXCELLENT**  
Fluorescence **NONE**  
Inscription(s) **(IGI) LG732552523**  
Comments: This Laboratory Grown Diamond was created by Chemical Vapor Deposition (CVD) growth process. Type IIa



September 9, 2025  
IGI Report No LG732552523  
**TRIANGULAR MIXED CUT**  
11.11 X 12.32 X 5.10 MM  
2.87 CARATS  
F  
VVS 2  
41.4%  
69%  
Medium  
Pointed  
EXCELLENT  
EXCELLENT  
NONE  
(IGI) LG732552523  
Comments: This Laboratory Grown Diamond was created by Chemical Vapor Deposition (CVD) growth process. Type IIa

**LABORATORY GROWN DIAMOND REPORT**

September 9, 2025  
IGI Report Number **LG732552523**  
Description **LABORATORY GROWN DIAMOND**  
Shape and Cutting Style **TRIANGULAR MIXED CUT**  
Measurements **11.11 X 12.32 X 5.10 MM**

**GRADING RESULTS**

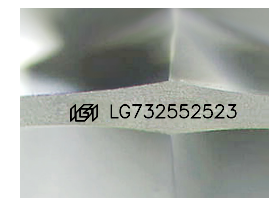
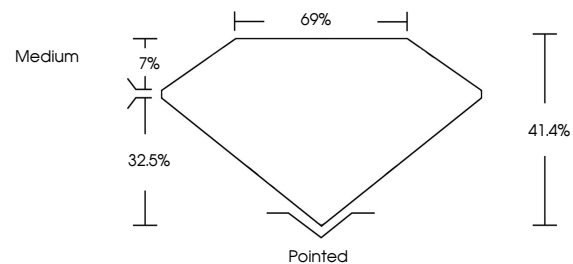
Carat Weight **2.87 CARATS**  
Color Grade **F**  
Clarity Grade **VVS 2**

**ADDITIONAL GRADING INFORMATION**

Polish **EXCELLENT**  
Symmetry **EXCELLENT**  
Fluorescence **NONE**  
Inscription(s) **(IGI) LG732552523**

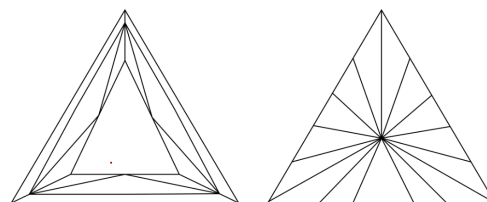
Comments: This Laboratory Grown Diamond was created by Chemical Vapor Deposition (CVD) growth process. Type IIa

**PROPORTIONS**



Sample Image Used

**CLARITY CHARACTERISTICS**



**KEY TO SYMBOLS**

Red symbols indicate internal characteristics.  
Green symbols indicate external characteristics.

**COLOR**

D E F G H I J Faint Very Light Light

**CLARITY**

IF	VS <sup>1-2</sup>	VS <sup>1-2</sup>	SI <sup>1-2</sup>	I <sup>1-3</sup>
Internally Flawless	Very Very Slightly Included	Very Slightly Included	Slightly Included	Included

