



ELECTRONIC COPY

LABORATORY GROWN DIAMOND REPORT

September 5, 2025	
IGI Report Number	LG732550813
Description	LABORATORY GROWN DIAMOND
Shape and Cutting Style	ROUND BRILLIANT
Measurements	9.23 - 9.28 X 5.75 MM

GRADING RESULTS

Carat Weight	3.04 CARATS
Color Grade	E
Clarity Grade	VVS 2
Cut Grade	IDEAL

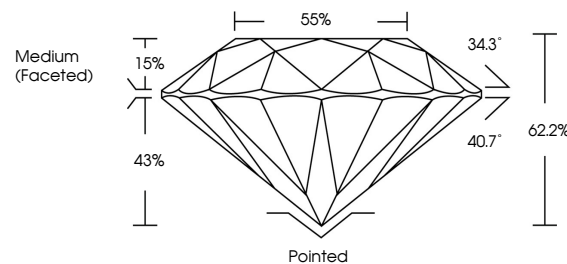
ADDITIONAL GRADING INFORMATION

Polish	EXCELLENT
Symmetry	EXCELLENT
Fluorescence	NONE
Inscription(s)	 LG732550813

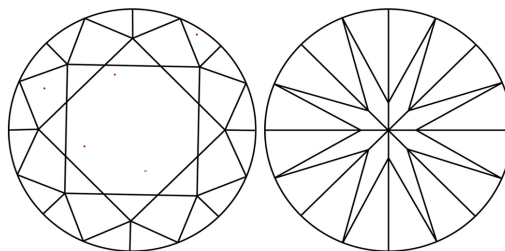
Comments: This Laboratory Grown Diamond was created by Chemical Vapor Deposition (CVD) growth process.
Type IIa

LG732550813
Report verification at igi.org

PROPORTIONS

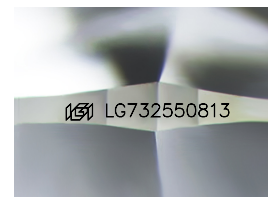


CLARITY CHARACTERISTICS



KEY TO SYMBOLS

Red symbols indicate internal characteristics.
Green symbols indicate external characteristics.



Sample Image Used

COLOR

D E F G H I J Faint Very Light Light

CLARITY

IF WS¹⁻² VS¹⁻² SI¹⁻² |¹⁻³

Internally Flawless	Very Very Slightly Included	Very Slightly Included	Slightly Included	Included
------------------------	--------------------------------	---------------------------	----------------------	----------

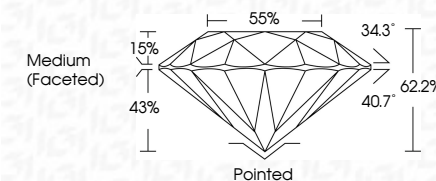
LABORATORY GROWN DIAMOND REPORT




September 5, 2025	
IGI Report Number	LG732550813
Description	LABORATORY GROWN DIAMOND
Shape and Cutting Style	ROUND BRILLIANT
Measurements	9.23 - 9.28 X 5.75 MM

GRADING RESULTS

Carat Weight	3.04 CARATS
Color Grade	E
Clarity Grade	VVS 2
Cut Grade	IDEAL



ADDITIONAL GRADING INFORMATION

Polish	EXCELLENT
Symmetry	EXCELLENT
Fluorescence	NONE
Inscription(s)	 LG732550813
<p>Comments: This Laboratory Grown Diamond was created by Chemical Vapor Deposition (CVD) growth process.</p> <p>Type IIa</p>	



© IGI 2020, International Gemological Institute

FD - 10 20

www.igi.org

THIS DOCUMENT WAS PRODUCED WITH THE FOLLOWING SECURITY MEASURES: SPECIAL DOCUMENT PAPER, INK SCREENS, WATERMARK BACKGROUND DESIGNS, HOLOGRAM AND OTHER SECURITY FEATURES NOT LISTED AND DO EXCEED DOCUMENT SECURITY INDUSTRY GUIDELINES

September 5, 2025
IGI Report No LG732550813
ROUND BRILLIANT

9.23 - 9.28 X 5.75 MM	Color Grade	VVS 2	Medium (Faceted)	Pointed EXCELLENT EXCELLENT NONE
	Clarity Grade	IDP AL		
	Cut Grade	62.2%		
	Depth	55%		
	Table			
	Girdle			
	Culet			
	Polish			
	Symmetry			
	Fluorescence			

Comments:
This Laboratory Grown Diamond was
created by Chemical Vapor Deposition
(CVD) growth process.