

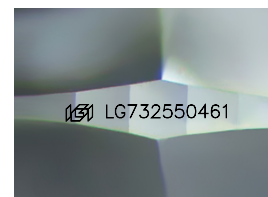
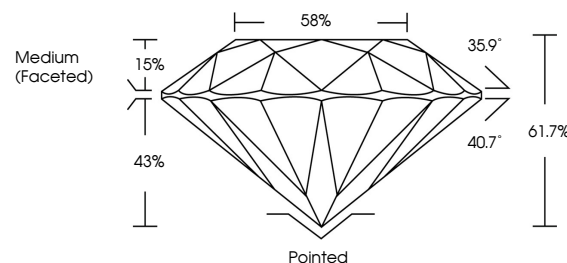


ELECTRONIC COPY

LABORATORY GROWN DIAMOND REPORT

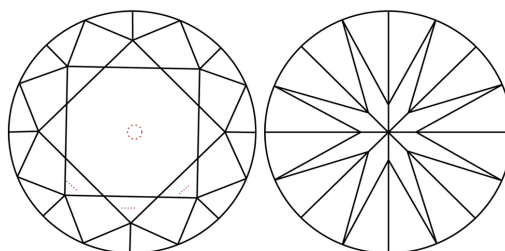
LG732550461
Report verification at igi.org

PROPORTIONS



Sample Image Used

CLARITY CHARACTERISTICS



KEY TO SYMBOLS

Red symbols indicate internal characteristics.
Green symbols indicate external characteristics.

COLOR

D E F G H I J Faint Very Light Light

CLARITY

IF WS¹⁻² VS¹⁻² SI¹⁻² |¹⁻³

Internally Flawless	Very Very Slightly Included	Very Slightly Included	Slightly Included	Included
------------------------	--------------------------------	---------------------------	----------------------	----------

LABORATORY GROWN DIAMOND REPORT



September 11, 2025

IGI Report Number **LG732550461**Description **LABORATORY GROWN DIAMOND**Shape and Cutting Style **ROUND BRILLIANT**

Measurements 8.10 - 8.14 X 5.01 MM

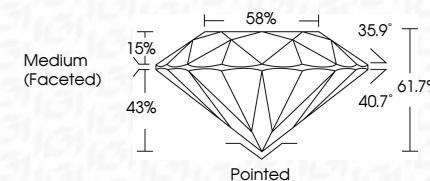
GRADING RESULTS

Carat Weight **2.04 CARATS**

Color Grade **FANCY VIVID BLUE**

Clarity Grade SI 1

Cut Grade **IDEAL**



ADDITIONAL GRADING INFORMATION

Polish **EXCELLENT**Symmetry **EXCELLENT**Fluorescence **NONE**Inscription(s) LG732550461

Comments: This Laboratory Grown Diamond was created by Chemical Vapor Deposition (CVD) growth process.

Indications of post-growth treatment.



September 11, 2005	2.04 CARATS
GI Report No. LG79550461	FANCY VIVID BLUE
ROUND BRILLIANT	SI 1
	IDEAL
	61.7%
	59%
	Medium (Fetched)
	Pointed
	EXCELLENT
	EXCELLENT
	NONE
	(#9115792590461)
	Comments:
	This Laboratory Grown Diamond was
	created by Chemical Vapor Deposition
	(CVD) growth process.
	Indications of post-growth treatment.



THIS DOCUMENT WAS PRODUCED WITH THE FOLLOWING SECURITY MEASURES: SPECIAL DOCUMENT PAPER, INK SCREENS, WATERMARK, BACKGROUND DESIGNS, HOLOGRAM AND OTHER SECURITY FEATURES NOT LISTED AND DO EXCEED DOCUMENT SECURITY INDUSTRY GUIDELINE