



ELECTRONIC COPY

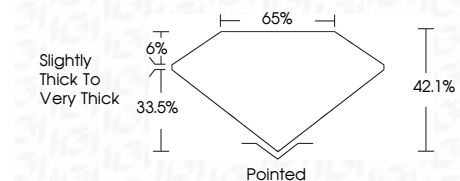
LG732549744
Report verification at igi.org



September 9, 2025
IGI Report Number **LG732549744**
Description **LABORATORY GROWN DIAMOND**

Shape and Cutting Style **TRIANGULAR MIXED CUT**
Measurements **11.40 X 12.98 X 5.46 MM**

GRADING RESULTS
Carat Weight **3.41 CARATS**
Color Grade **F**
Clarity Grade **VVS 2**



ADDITIONAL GRADING INFORMATION
Polish **EXCELLENT**
Symmetry **EXCELLENT**
Fluorescence **NONE**
Inscription(s) **IGI LG732549744**
Comments: This Laboratory Grown Diamond was created by Chemical Vapor Deposition (CVD) growth process. Type IIa



September 9, 2025
IGI Report No LG732549744
TRIANGULAR MIXED CUT
11.40 X 12.98 X 5.46 MM
3.41 CARATS
F
VVS 2
42.1%
65%
Slightly Thick To Very Thick
Pointed
EXCELLENT
EXCELLENT
NONE
IGI LG732549744
Comments: This Laboratory Grown Diamond was created by Chemical Vapor Deposition (CVD) growth process. Type IIa

LABORATORY GROWN DIAMOND REPORT

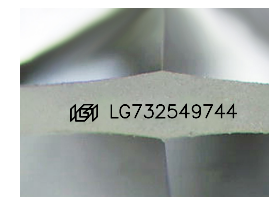
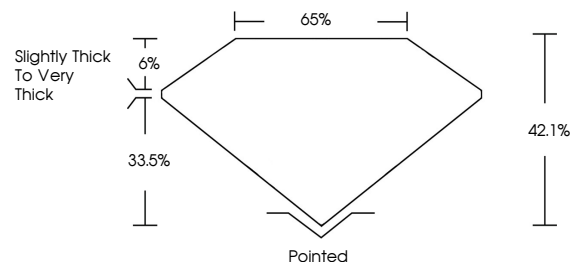
September 9, 2025
IGI Report Number **LG732549744**
Description **LABORATORY GROWN DIAMOND**
Shape and Cutting Style **TRIANGULAR MIXED CUT**
Measurements **11.40 X 12.98 X 5.46 MM**

GRADING RESULTS
Carat Weight **3.41 CARATS**
Color Grade **F**
Clarity Grade **VVS 2**

ADDITIONAL GRADING INFORMATION
Polish **EXCELLENT**
Symmetry **EXCELLENT**
Fluorescence **NONE**
Inscription(s) **IGI LG732549744**

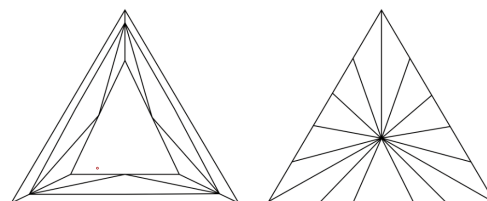
Comments: This Laboratory Grown Diamond was created by Chemical Vapor Deposition (CVD) growth process. Type IIa

PROPORTIONS



Sample Image Used

CLARITY CHARACTERISTICS



KEY TO SYMBOLS

Red symbols indicate internal characteristics.
Green symbols indicate external characteristics.

COLOR

D E F G H I J Faint Very Light Light

CLARITY

| | | | | |
|---------------------|-----------------------------|------------------------|-------------------|------------------|
| IF | VS ¹⁻² | VS ¹⁻² | SI ¹⁻² | I ¹⁻³ |
| Internally Flawless | Very Very Slightly Included | Very Slightly Included | Slightly Included | Included |

