



**ELECTRONIC COPY**

LG732549675  
Report verification at igi.org



September 8, 2025

IGI Report Number **LG732549675**

Description **LABORATORY GROWN DIAMOND**

Shape and Cutting Style **CUT CORNERED  
RECTANGULAR MODIFIED  
BRILLIANT**

Measurements **9.28 X 6.61 X 4.56 MM**

**GRADING RESULTS**

Carat Weight **2.56 CARATS**

Color Grade **E**

Clarity Grade **VS 1**

**LABORATORY GROWN DIAMOND REPORT**

September 8, 2025

IGI Report Number **LG732549675**

Description **LABORATORY GROWN DIAMOND**

Shape and Cutting Style **CUT CORNERED RECTANGULAR  
MODIFIED BRILLIANT**

Measurements **9.28 X 6.61 X 4.56 MM**

**GRADING RESULTS**

Carat Weight **2.56 CARATS**

Color Grade **E**

Clarity Grade **VS 1**

**ADDITIONAL GRADING INFORMATION**

Polish **EXCELLENT**

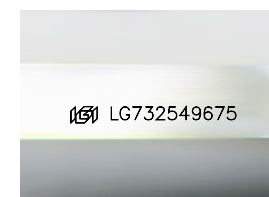
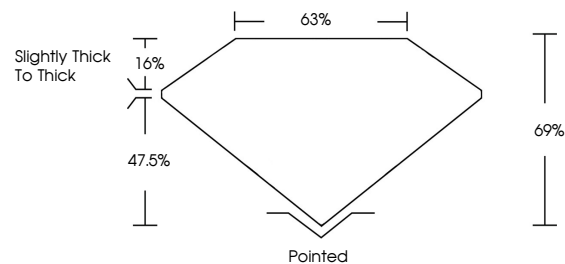
Symmetry **EXCELLENT**

Fluorescence **NONE**

Inscription(s) **IGI LG732549675**

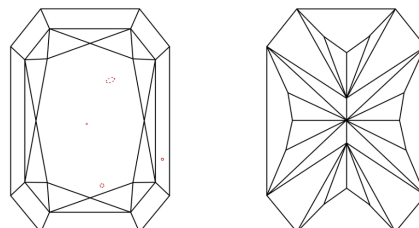
Comments: This Laboratory Grown Diamond was created by Chemical Vapor Deposition (CVD) growth process.  
Type IIa

**PROPORTIONS**



Sample Image Used

**CLARITY CHARACTERISTICS**



**KEY TO SYMBOLS**

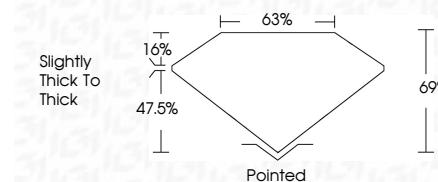
Red symbols indicate internal characteristics.  
Green symbols indicate external characteristics.

**COLOR**

D E F G H I J Faint Very Light Light

**CLARITY**

IF	WS <sup>1-2</sup>	VS <sup>1-2</sup>	SI <sup>1-2</sup>	I <sup>1-3</sup>
Internally Flawless	Very Very Slightly Included	Very Slightly Included	Slightly Included	Included



**ADDITIONAL GRADING INFORMATION**

Polish **EXCELLENT**

Symmetry **EXCELLENT**

Fluorescence **NONE**

Inscription(s) **IGI LG732549675**

Comments: This Laboratory Grown Diamond was created by Chemical Vapor Deposition (CVD) growth process.  
Type IIa



**IGI**



September 8, 2025	IGI Report No LG732549675	CUT CORNERED RECT. MODIFIED BRILLIANT	9.28 X 6.61 X 4.56 MM	2.56 CARATS	E	VS 1	69%	63%	Slightly thick to thick	Pointed	EXCELLENT	EXCELLENT	NONE	IGI LG732549675
Polish	Symmetry	Fluorescence	Inscription(s)	Culet	Polish	Symmetry	Fluorescence	Inscription(s)	Culet	Polish	Symmetry	Fluorescence	Inscription(s)	Comments: This Laboratory Grown Diamond was created by Chemical Vapor Deposition (CVD) growth process. Type IIa