



INTERNATIONAL GEMOLOGICAL INSTITUTE

ELECTRONIC COPY

LABORATORY GROWN DIAMOND REPORT

September 9, 2025
IGI Report Number **LG732542807**
Description **LABORATORY GROWN DIAMOND**
Shape and Cutting Style **PRINCESS CUT**
Measurements **4.68 X 4.51 X 3.31 MM**

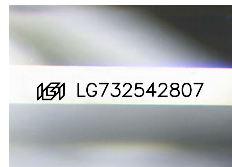
GRADING RESULTS

Carat Weight **0.60 CARAT**
Color Grade **F**
Clarity Grade **VS 2**
Cut Grade **VERY GOOD**

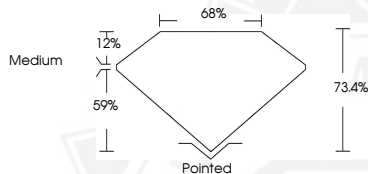
ADDITIONAL GRADING INFORMATION

Polish **EXCELLENT**
Symmetry **EXCELLENT**
Fluorescence **NONE**
Inscription(s) **IGI LG732542807**

Comments: This Laboratory Grown Diamond was created by
Chemical Vapor Deposition (CVD) growth process.
Type IIa



Sample Image Used



September 9, 2025

IGI Report Number **LG732542807**

PRINCESS CUT

LABORATORY GROWN DIAMOND

4.68 X 4.51 X 3.31 MM

Carat Weight **0.60 CARAT**

Color Grade **F**

Clarity Grade **VS 2**

Cut Grade **VERY GOOD**

Polish **EXCELLENT**

Symmetry **EXCELLENT**

Fluorescence **NONE**

Inscription(s) **IGI LG732542807**

Comments: This Laboratory Grown
Diamond was created by
Chemical Vapor Deposition (CVD)
growth process. Type IIa



September 9, 2025

IGI Report Number **LG732542807**

PRINCESS CUT

LABORATORY GROWN DIAMOND

4.68 X 4.51 X 3.31 MM

Carat Weight **0.60 CARAT**

Color Grade **F**

Clarity Grade **VS 2**

Cut Grade **VERY GOOD**

Polish **EXCELLENT**

Symmetry **EXCELLENT**

Fluorescence **NONE**

Inscription(s) **IGI LG732542807**

Comments: This Laboratory Grown
Diamond was created by
Chemical Vapor Deposition (CVD)
growth process. Type IIa



THIS DOCUMENT WAS PRODUCED WITH THE FOLLOWING SECURITY MEASURES: SPECIAL DOCUMENT PAPER, INK SCREENS, WATERMARK, BACKGROUND DESIGNS, HOLOGRAM AND OTHER SECURITY FEATURES NOT LISTED AND DO EXCEED DOCUMENT SECURITY INDUSTRY GUIDELINES.

For terms & conditions and to verify this report, please visit www.igi.org