



**ELECTRONIC COPY**

LG732542728  
Report verification at igi.org



September 16, 2025

IGI Report Number **LG732542728**

Description **LABORATORY GROWN DIAMOND**

Shape and Cutting Style **OLD EUROPEAN CUT**

Measurements **6.31 - 6.33 X 3.92 MM**

**GRADING RESULTS**

Carat Weight **1.07 CARAT**

Color Grade **FANCY VIVID GREEN**

Clarity Grade **VVS 2**

September 16, 2025  
IGI Report Number **LG732542728**  
Description **LABORATORY GROWN DIAMOND**  
Shape and Cutting Style **OLD EUROPEAN CUT**  
Measurements **6.31 - 6.33 X 3.92 MM**

**GRADING RESULTS**

Carat Weight **1.07 CARAT**

Color Grade **FANCY VIVID GREEN**

Clarity Grade **VVS 2**

**ADDITIONAL GRADING INFORMATION**

Polish **EXCELLENT**

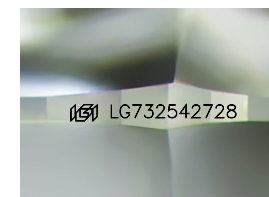
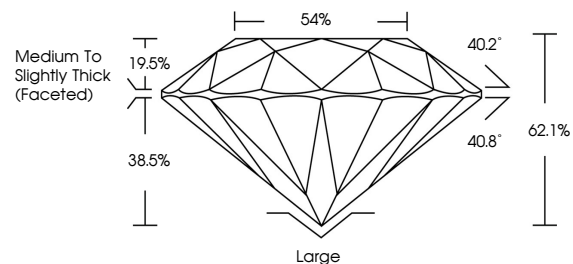
Symmetry **EXCELLENT**

Fluorescence **NONE**

Inscription(s) **IGI LG732542728**

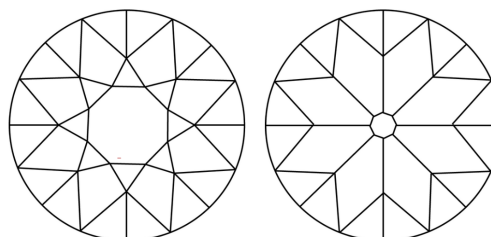
Comments: This Laboratory Grown Diamond was created by Chemical Vapor Deposition (CVD) growth process.  
Indications of post-growth treatment.

**PROPORTIONS**



Sample Image Used

**CLARITY CHARACTERISTICS**



**KEY TO SYMBOLS**

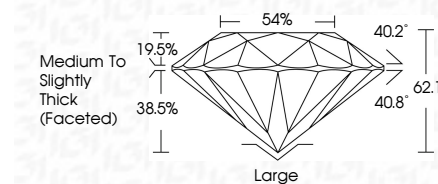
Red symbols indicate internal characteristics.  
Green symbols indicate external characteristics.

**COLOR**

D E F G H I J Faint Very Light Light

**CLARITY**

IF	VS <sup>1-2</sup>	VS <sup>1-2</sup>	SI <sup>1-2</sup>	I <sup>1-3</sup>
Internally Flawless	Very Very Slightly Included	Very Slightly Included	Slightly Included	Included



**ADDITIONAL GRADING INFORMATION**

Polish **EXCELLENT**

Symmetry **EXCELLENT**

Fluorescence **NONE**

Inscription(s) **IGI LG732542728**

Comments: This Laboratory Grown Diamond was created by Chemical Vapor Deposition (CVD) growth process.  
Indications of post-growth treatment.



**IGI**



September 16, 2025  
IGI Report No LG732542728  
**OLD EUROPEAN CUT**  
Carat Weight **1.07 CARAT**  
Color Grade **FANCY VIVID GREEN**  
Clarity Grade **VVS 2**  
Depth **62.1%**  
Table **54%**  
Girdle **Medium to Slightly Thick (Faceted)**  
Culet **Large**  
Polish **EXCELLENT**  
Symmetry **EXCELLENT**  
Fluorescence **NONE**  
Inscription(s) **IGI LG732542728**  
Comments: This Laboratory Grown Diamond was created by Chemical Vapor Deposition (CVD) growth process.  
Indications of post-growth treatment.