



ELECTRONIC COPY

LG732531405
Report verification at igi.org



September 13, 2025
IGI Report Number **LG732531405**
Description **LABORATORY GROWN DIAMOND**
Shape and Cutting Style **CUSHION MODIFIED BRILLIANT**
Measurements **9.05 X 6.72 X 4.52 MM**
GRADING RESULTS
Carat Weight **2.31 CARATS**
Color Grade **FANCY VIVID GREEN**
Clarity Grade **VS 1**

LABORATORY GROWN DIAMOND REPORT

September 13, 2025
IGI Report Number **LG732531405**
Description **LABORATORY GROWN DIAMOND**
Shape and Cutting Style **CUSHION MODIFIED BRILLIANT**
Measurements **9.05 X 6.72 X 4.52 MM**

GRADING RESULTS

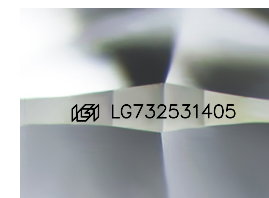
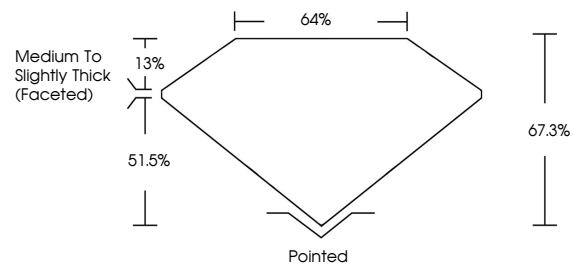
Carat Weight **2.31 CARATS**
Color Grade **FANCY VIVID GREEN**
Clarity Grade **VS 1**

ADDITIONAL GRADING INFORMATION

Polish **VERY GOOD**
Symmetry **EXCELLENT**
Fluorescence **NONE**
Inscription(s) **IGI LG732531405**

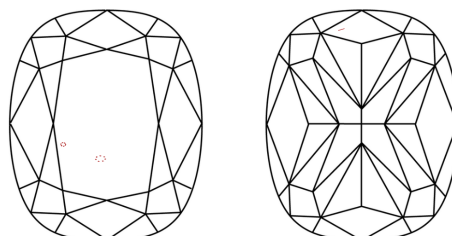
Comments: This Laboratory Grown Diamond was created by Chemical Vapor Deposition (CVD) growth process.
Indications of post-growth treatment.

PROPORTIONS



Sample Image Used

CLARITY CHARACTERISTICS



KEY TO SYMBOLS

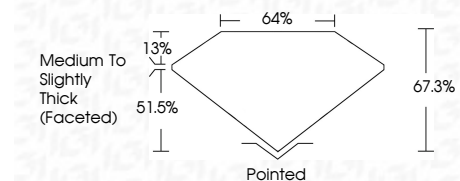
Red symbols indicate internal characteristics.
Green symbols indicate external characteristics.

COLOR

D E F G H I J Faint Very Light Light

CLARITY

IF	VS ¹⁻²	VS ¹⁻²	SI ¹⁻²	I ¹⁻³
Internally Flawless	Very Very Slightly Included	Very Slightly Included	Slightly Included	Included



ADDITIONAL GRADING INFORMATION

Polish **VERY GOOD**
Symmetry **EXCELLENT**
Fluorescence **NONE**
Inscription(s) **IGI LG732531405**
Comments: This Laboratory Grown Diamond was created by Chemical Vapor Deposition (CVD) growth process.
Indications of post-growth treatment.



September 13, 2025
IGI Report No LG732531405
CUSHION MODIFIED BRILLIANT
9.05 X 6.72 X 4.52 MM
2.31 CARATS
FANCY VIVID GREEN
VS 1
67.3%
64%
Medium to Slightly Thick (Faceted)
Pointed
Polish **VERY GOOD**
Symmetry **EXCELLENT**
Fluorescence **NONE**
Inscription(s) **IGI LG732531405**
Comments: This Laboratory Grown Diamond was created by Chemical Vapor Deposition (CVD) growth process.
Indications of post-growth treatment.