



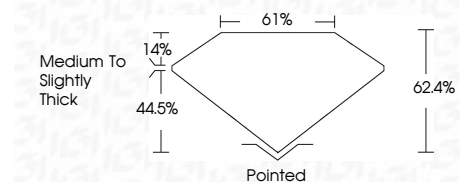
ELECTRONIC COPY

LG732529708
Report verification at igi.org



September 8, 2025
IGI Report Number **LG732529708**
Description **LABORATORY GROWN DIAMOND**
Shape and Cutting Style **PENTAGONAL STEP CUT**
Measurements **8.60 X 4.92 X 3.07 MM**

GRADING RESULTS
Carat Weight **1.01 CARAT**
Color Grade **E**
Clarity Grade **VVS 2**



ADDITIONAL GRADING INFORMATION
Polish **VERY GOOD**
Symmetry **VERY GOOD**
Fluorescence **NONE**
Inscription(s) **IGI LG732529708**
Comments: As Grown - No indication of post-growth treatment.
This Laboratory Grown Diamond was created by High Pressure High Temperature (HPHT) growth process.
Type II



September 8, 2025
IGI Report No LG732529708
PENTAGONAL STEP CUT
8.60 X 4.92 X 3.07 MM
1.01 CARAT
E
VVS 2
62.4%
14%
44.5%
Medium to Slightly Thick
Pointed
VERY GOOD
VERY GOOD
NONE
IGI LG732529708
Comments: As Grown - No indication of post-growth treatment.
This Laboratory Grown Diamond was created by High Pressure High Temperature (HPHT) growth process.
Type II

LABORATORY GROWN DIAMOND REPORT

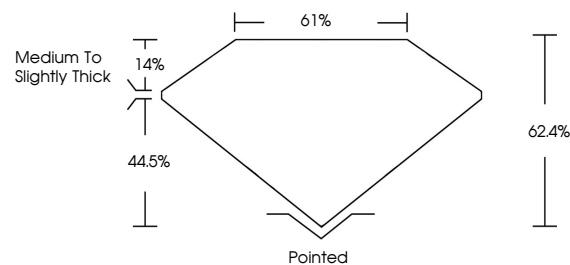
September 8, 2025
IGI Report Number **LG732529708**
Description **LABORATORY GROWN DIAMOND**
Shape and Cutting Style **PENTAGONAL STEP CUT**
Measurements **8.60 X 4.92 X 3.07 MM**

GRADING RESULTS
Carat Weight **1.01 CARAT**
Color Grade **E**
Clarity Grade **VVS 2**

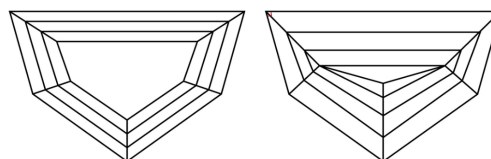
ADDITIONAL GRADING INFORMATION
Polish **VERY GOOD**
Symmetry **VERY GOOD**
Fluorescence **NONE**
Inscription(s) **IGI LG732529708**

Comments: As Grown - No indication of post-growth treatment.
This Laboratory Grown Diamond was created by High Pressure High Temperature (HPHT) growth process.
Type II

PROPORTIONS

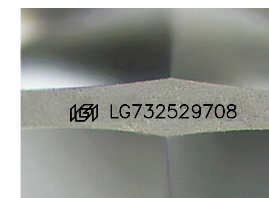


CLARITY CHARACTERISTICS



KEY TO SYMBOLS

Red symbols indicate internal characteristics.
Green symbols indicate external characteristics.



Sample Image Used

COLOR

D E F G H I J Faint Very Light Light

CLARITY

IF	WS ¹⁻²	VS ¹⁻²	SI ¹⁻²	I ¹⁻³
Internally Flawless	Very Very Slightly Included	Very Slightly Included	Slightly Included	Included

