

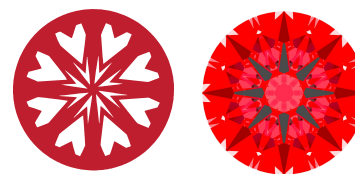


**INTERNATIONAL
GEMOLOGICAL
INSTITUTE**

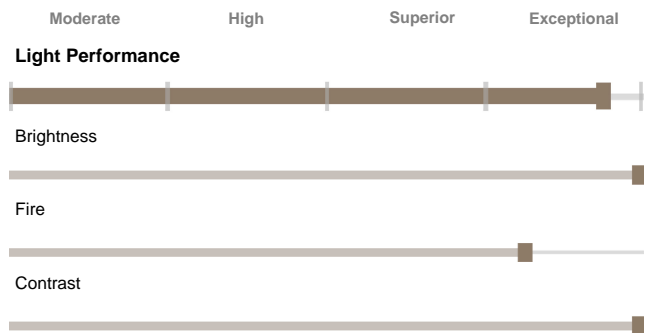
LG732528735
Report verification at igi.org

LIGHT PERFORMANCE REPORT

Light Performance Grade: Exceptional



Structured Light Environment Representation



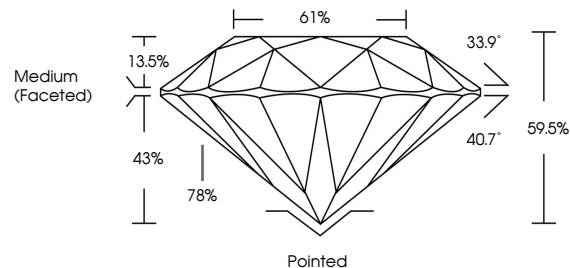
COLOR



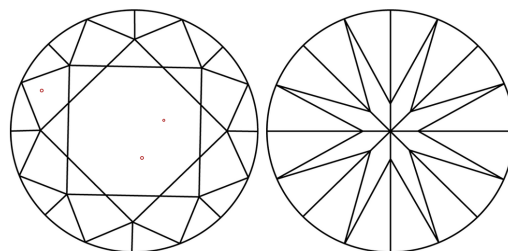
CLARITY



PROPORTIONS

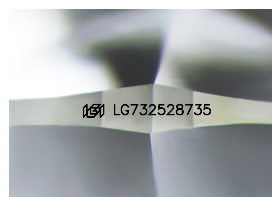


CLARITY CHARACTERISTICS



KEY TO SYMBOLS

Red symbols indicate internal characteristics.
Green symbols indicate external characteristics.



Sample Image Used

www.igi.org

ELECTRONIC COPY

LABORATORY GROWN DIAMOND REPORT

September 8, 2025
IGI Report Number **LG732528735**
Description **LABORATORY GROWN DIAMOND**
Shape and Cutting Style **ROUND BRILLIANT**
Measurements **9.39 - 9.43 x 5.60 mm**

GRADING RESULTS

Carat Weight **3.04 CARATS**
Color Grade **D**
Clarity Grade **VS 1**
Cut Grade **EXCELLENT**

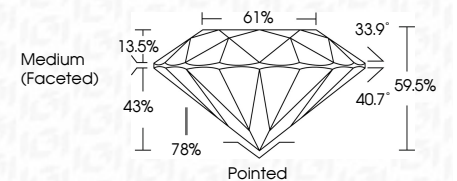
ADDITIONAL GRADING INFORMATION

Polish **EXCELLENT**
Symmetry **EXCELLENT**
Fluorescence **NONE**
Inscription(s) **IGI LG732528735**

Comments: HEARTS & ARROWS
This Laboratory Grown Diamond was created by Chemical Vapor Deposition (CVD) growth process. Type IIa



September 8, 2025
IGI Report Number **LG732528735**
Description **LABORATORY GROWN DIAMOND**
Shape and Cutting Style **ROUND BRILLIANT**
Measurements **9.39 - 9.43 X 5.60 MM**
GRADING RESULTS
Carat Weight **3.04 CARATS**
Color Grade **D**
Clarity Grade **VS 1**
Cut Grade **EXCELLENT**



ADDITIONAL GRADING INFORMATION

Polish **EXCELLENT**
Symmetry **EXCELLENT**
Fluorescence **NONE**
Inscription(s) **IGI LG732528735**
Comments: HEARTS & ARROWS
This Laboratory Grown Diamond was created by Chemical Vapor Deposition (CVD) growth process. Type IIa



| | | | | | | | | | |
|-----------------------|---------------------------|-----------------|-------------|-------|------------------|------------------|-----------|-----------|-----------------|
| September 8, 2025 | IGI Report No LG732528735 | ROUND BRILLIANT | 3.04 CARATS | D | VS 1 | EXCELLENT | EXCELLENT | NONE | IGI LG732528735 |
| 9.39 - 9.43 X 5.60 MM | Color Grade | Cut Grade | Depth | Table | 61% | Medium (Faceted) | Pointed | Polish | EXCELLENT |
| | Clarity Grade | Cut Grade | Table | 61% | Medium (Faceted) | Pointed | Polish | EXCELLENT | EXCELLENT |
| | Fluorescence | Inscription(s) | | | | | | | |

Comments: HEARTS & ARROWS
This Laboratory Grown Diamond was created by Chemical Vapor Deposition (CVD) growth process. Type IIa

