



September 4, 2025

IGI Report Number **LG732519797**

**ROUND BRILLIANT
LABORATORY GROWN DIAMOND
5.60 - 5.65 X 3.55 MM**

Carat Weight	0.70 CARAT
Color Grade	D
Clarity Grade	VVS 2
Cut Grade	EXCELLENT
Polish	EXCELLENT
Symmetry	EXCELLENT
Fluorescence	NONE
Inscription(s)	IGI LG732519797

Comments: As Grown - No indication of post-growth treatment. This Laboratory Grown Diamond was created by High Pressure High Temperature (HPHT) growth process. Type II

LABORATORY GROWN DIAMOND REPORT

September 4, 2025	
IGI Report Number	LG732519797
Description	LABORATORY GROWN DIAMOND
Shape and Cutting Style	ROUND BRILLIANT
Measurements	5.60 - 5.65 X 3.55 MM

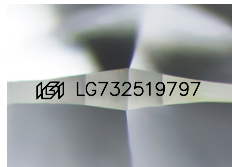
GRADING RESULTS

Carat Weight	0.70 CARAT
Color Grade	D
Clarity Grade	VVS 2
Cut Grade	EXCELLENT

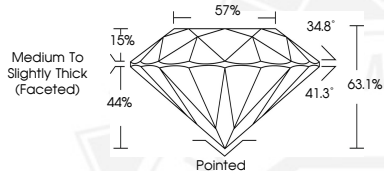
ADDITIONAL GRADING INFORMATION

Polish	EXCELLENT
Symmetry	EXCELLENT
Fluorescence	NONE
Inscription(s)	IGI LG732519797

Comments: As Grown - No indication of post-growth treatment. This Laboratory Grown Diamond was created by High Pressure High Temperature (HPHT) growth process. Type II



Sample Image Used



September 4, 2025

IGI Report Number **LG732519797**

**ROUND BRILLIANT
LABORATORY GROWN DIAMOND
5.60 - 5.65 X 3.55 MM**

Carat Weight	0.70 CARAT
Color Grade	D
Clarity Grade	VVS 2
Cut Grade	EXCELLENT
Polish	EXCELLENT
Symmetry	EXCELLENT
Fluorescence	NONE
Inscription(s)	IGI LG732519797

Comments: As Grown - No indication of post-growth treatment. This Laboratory Grown Diamond was created by High Pressure High Temperature (HPHT) growth process. Type II

THIS DOCUMENT WAS PRODUCED WITH THE FOLLOWING SECURITY MEASURES: SPECIAL DOCUMENT PAPER, INK SCREENS, WATERMARK, BACKGROUND DESIGNS, HOLOGRAM AND OTHER SECURITY FEATURES NOT LISTED AND DO EXCEED DOCUMENT SECURITY INDUSTRY GUIDELINES.

For terms & conditions and to verify this report, please visit www.igi.org