



ELECTRONIC COPY

LABORATORY GROWN DIAMOND REPORT

| | |
|-------------------------|--------------------------|
| September 4, 2025 | |
| IGI Report Number | LG732518437 |
| Description | LABORATORY GROWN DIAMOND |
| Shape and Cutting Style | ROUND BRILLIANT |
| Measurements | 9.28 - 9.33 X 5.66 MM |

GRADING RESULTS

| | |
|---------------|-------------|
| Carat Weight | 3.01 CARATS |
| Color Grade | E |
| Clarity Grade | VVS 2 |
| Cut Grade | IDEAL |

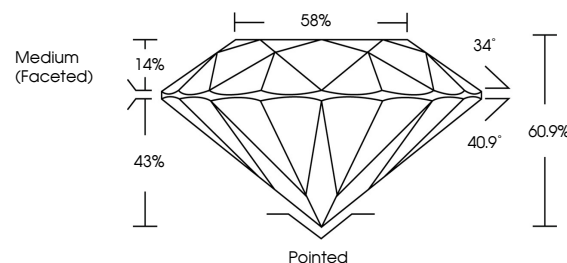
ADDITIONAL GRADING INFORMATION

| | |
|----------------|-----------------|
| Polish | EXCELLENT |
| Symmetry | EXCELLENT |
| Fluorescence | NONE |
| Inscription(s) | 151 LG732518437 |

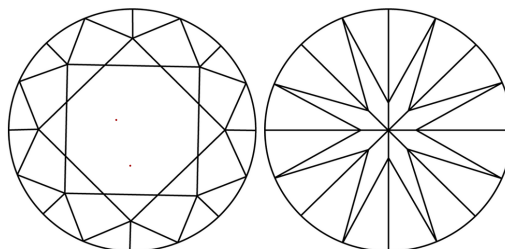
Comments: This Laboratory Grown Diamond was created by Chemical Vapor Deposition (CVD) growth process.
Type IIa

LG732518437
Report verification at iqi.org

PROPORTIONS

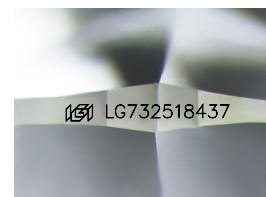


CLARITY CHARACTERISTICS



KEY TO SYMBOLS

Red symbols indicate internal characteristics.
Green symbols indicate external characteristics.



Sample Image Used

COLOR

D E F G H I J Faint Very Light Light

CLARITY

IF WS¹⁻² VS¹⁻² SI¹⁻² 1-3

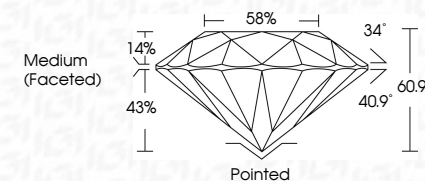
| | | | | |
|------------------------|--------------------------------|---------------------------|----------------------|----------|
| Internally Flawless | Very Very Slightly Included | Very Slightly Included | Slightly Included | Included |
|------------------------|--------------------------------|---------------------------|----------------------|----------|



| | |
|-------------------------|--------------------------|
| September 4, 2025 | |
| IGI Report Number | LG732518437 |
| Description | LABORATORY GROWN DIAMOND |
| Shape and Cutting Style | ROUND BRILLIANT |
| Measurements | 9.28 - 9.33 X 5.66 MM |

GRADING RESULTS

| | |
|---------------|-------------|
| Carat Weight | 3.01 CARATS |
| Color Grade | E |
| Clarity Grade | VVS 2 |
| Cut Grade | IDEAL |



ADDITIONAL GRADING INFORMATION

| | |
|--|------------------------------|
| Polish | EXCELLENT |
| Symmetry | EXCELLENT |
| Fluorescence | NONE |
| Inscription(s) | (GIA) LG732518437 |
| Comments: This Laboratory Grown Diamond was created by Chemical Vapor Deposition (CVD) growth process. | |
| Type IIa | |



© IGI 2020, International Gemological Institute

FD - 10 20

www.igi.org

THIS DOCUMENT WAS PRODUCED WITH THE FOLLOWING SECURITY MEASURES: SPECIAL DOCUMENT PAPER, INK SCREENS, WATERMARK BACKGROUND DESIGNS, HOLOGRAM AND OTHER SECURITY FEATURES NOT LISTED AND DO EXCEED DOCUMENT SECURITY INDUSTRY GUIDELINES

September 4, 2025
 CGI Report No LG732518437
 BOUND BRILLIANT

| | | |
|-----------------|-----------------------|------------------|
| ROUND BRILLIANT | 2.28 - 9.33 X 5.66 MM | 3.01 CARATS |
| Color | Color Grade | E |
| Clarity | Clarity Grade | VVS 2 |
| Cut | Cut Grade | IDEAL |
| Depth | Depth | 60.9% |
| Table | Table | 58% |
| Girdle | Girdle | Medium (Faceted) |
| Culet | Culet | Pointed |
| Polish | Polish | EXCELLENT |
| Symmetry | Symmetry | EXCELLENT |
| Fluorescence | Fluorescence | NONE |

Comments:
This Laboratory Grown Diamond was
created by Chemical Vapor Deposition
(CVD) growth process.