



INTERNATIONAL GEMOLOGICAL INSTITUTE

ELECTRONIC COPY

LABORATORY GROWN DIAMOND REPORT

September 10, 2025

IGI Report Number

LG732509274

Description

LABORATORY GROWN DIAMOND

Shape and Cutting Style

PEAR BRILLIANT

Measurements

7.21 X 4.68 X 2.81 MM

GRADING RESULTS

Carat Weight

0.57 CARAT

Color Grade

FANCY VIVID GREEN

Clarity Grade

VS 1

ADDITIONAL GRADING INFORMATION

Polish

GOOD

Symmetry

GOOD

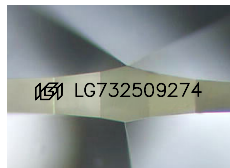
Fluorescence

NONE

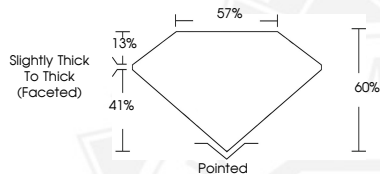
Inscription(s)

IGI LG732509274

Comments: This Laboratory Grown Diamond was created by High Pressure High Temperature (HPHT) growth process. Indications of post-growth treatment.



Sample Image Used



September 10, 2025

IGI Report Number LG732509274

PEAR BRILLIANT

LABORATORY GROWN DIAMOND

7.21 X 4.68 X 2.81 MM

Carat Weight 0.57 CARAT

Color Grade FANCY VIVID GREEN

Clarity Grade VS 1

Polish GOOD

Symmetry GOOD

Fluorescence NONE

Inscription(s) IGI LG732509274

Comments: This Laboratory Grown Diamond was created by High Pressure High Temperature (HPHT) growth process. Indications of post-growth treatment.



September 10, 2025

IGI Report Number LG732509274

PEAR BRILLIANT

LABORATORY GROWN DIAMOND

7.21 X 4.68 X 2.81 MM

Carat Weight 0.57 CARAT

Color Grade FANCY VIVID GREEN

Clarity Grade VS 1

Polish GOOD

Symmetry GOOD

Fluorescence NONE

Inscription(s) IGI LG732509274

Comments: This Laboratory Grown Diamond was created by High Pressure High Temperature (HPHT) growth process. Indications of post-growth treatment.



THIS DOCUMENT WAS PRODUCED WITH THE FOLLOWING SECURITY MEASURES: SPECIAL DOCUMENT PAPER, INK SCREENS, WATERMARK, BACKGROUND DESIGNS, HOLOGRAM AND OTHER SECURITY FEATURES NOT LISTED AND DO EXCEED DOCUMENT SECURITY INDUSTRY GUIDELINES.

For terms & conditions and to verify this report, please visit www.igi.org