



ELECTRONIC COPY

LABORATORY GROWN DIAMOND REPORT

September 4, 2025	
IGI Report Number	LG732505343
Description	LABORATORY GROWN DIAMOND
Shape and Cutting Style	ROUND BRILLIANT
Measurements	11.35 - 11.42 X 6.91 MM
GRADING RESULTS	
Carat Weight	5.55 CARATS
Color Grade	E
Clarity Grade	VVS 2
Cut Grade	IDEAL

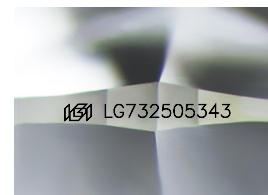
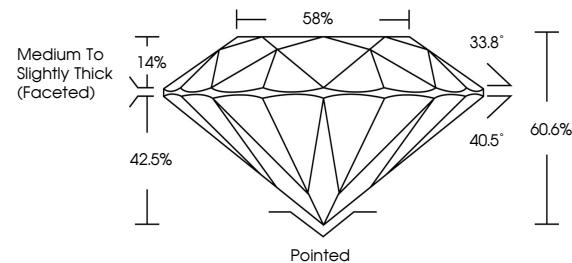
ADDITIONAL GRADING INFORMATION

Polish	EXCELLENT
Symmetry	EXCELLENT
Fluorescence	NONE
Inscription(s)	 LG732505343

Comments: This Laboratory Grown Diamond was created by Chemical Vapor Deposition (CVD) growth process.
Type IIa

LG732505343
Report verification at igi.org

PROPORTIONS



Sample Image Used

COLOR

D E F G H I J Faint Very Light Light

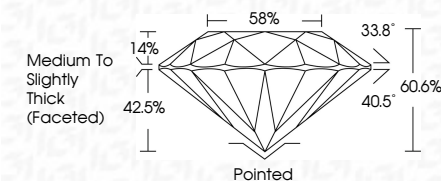
CLARITY

IF	VS ¹⁻²	VS ¹⁻²	SI ¹⁻²	I ¹⁻³
Internally Flawless	Very Very Slightly Included	Very Slightly Included	Slightly Included	Included

LABORATORY GROWN DIAMOND REPORT



September 4, 2025	
IGI Report Number	LG732505343
Description	LABORATORY GROWN DIAMOND
Shape and Cutting Style	ROUND BRILLIANT
Measurements	11.35 - 11.42 X 6.91 MM
GRADING RESULTS	
Carat Weight	5.55 CARATS
Color Grade	E
Clarity Grade	VVS 2
Cut Grade	IDEAL



ADDITIONAL GRADING INFORMATION

Polish	EXCELLENT
Symmetry	EXCELLENT
Fluorescence	NONE
Inscription(s)	 LG732505343
<p>Comments: This Laboratory Grown Diamond was created by Chemical Vapor Deposition (CVD) growth process.</p> <p>Type IIa</p>	



IG



© IGI 2020, International Gemological Institute

FD - 10 20



THIS DOCUMENT WAS PRODUCED WITH THE FOLLOWING SECURITY MEASURES: SPECIAL DOCUMENT PAPER, INK SCREENS, WATERMARK, BACKGROUND DESIGNS, HOLOGRAM AND OTHER SECURITY FEATURES NOT LISTED AND DO EXCEED DOCUMENT SECURITY INDUSTRY GUIDELINES

www.igi.org

September 4, 2025
IGI Report No LG732505343
ROUND BRILLIANT

11.35 - 11.42 X 6.91 MM	Carat Weight	5.55 CARATS
	Color Grade	E
	Clarity Grade	VVS 2
	Cut Grade	IDP AL
	Depth	60.0%
	Table	58%
	Girdle	Medium to Slightly Thick (Faceted)
	Culet	Pointed
	Polish	EXCELLENT
	Symmetry	EXCELLENT
	Fluorescence	NONE
	Inspection	NO INCLUSIONS

Comments:
This Laboratory Grown Diamond was created by Chemical Vapor Deposition (CVD) growth process.