



ELECTRONIC COPY

LABORATORY GROWN DIAMOND REPORT

September 5, 2025	
IGI Report Number	LG732503598
Description	LABORATORY GROWN DIAMOND
Shape and Cutting Style	HEXAGONAL MODIFIED BRILLIANT
Measurements	14.06 X 6.91 X 4.82 MM

GRADING RESULTS

Carat Weight	3.18 CARATS
Color Grade	G
Clarity Grade	VVS 2

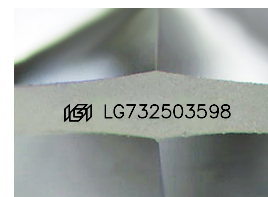
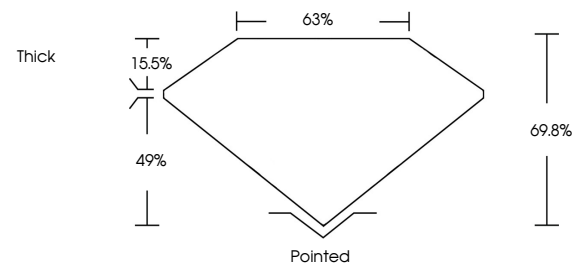
ADDITIONAL GRADING INFORMATION

Polish	EXCELLENT
Symmetry	EXCELLENT
Fluorescence	NONE
Inscription(s)	 LG732503598

Comments: This Laboratory Grown Diamond was created by Chemical Vapor Deposition (CVD) growth process.
Type IIa

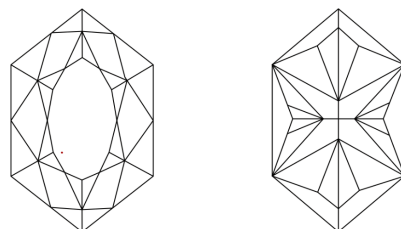
LG732503598
Report verification at igi.org

PROPORTIONS



Sample Image Used

CLARITY CHARACTERISTICS



KEY TO SYMBOLS

Red symbols indicate internal characteristics.
Green symbols indicate external characteristics.

COLOR

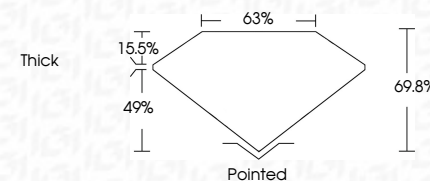
D E F G H I J Faint Very Light Light

CLARITY

IF	VS ¹⁻²	VS ¹⁻²	SI ¹⁻²	I ¹⁻³
Internally Flawless	Very Very Slightly Included	Very Slightly Included	Slightly Included	Included



September 5, 2025	
IGI Report Number	LG732503598
Description	LABORATORY GROWN DIAMOND
Shape and Cutting Style	HEXAGONAL MODIFIED BRILLIANT
Measurements	14.06 X 6.91 X 4.82 MM
GRADING RESULTS	
Carat Weight	3.18 CARATS
Color Grade	G
Clarity Grade	VVS 2



ADDITIONAL GRADING INFORMATION

Polish	EXCELLENT
Symmetry	EXCELLENT
Fluorescence	NONE
Inscription(s)	(G) LG732503598
Comments: This Laboratory Grown Diamond was created by Chemical Vapor Deposition (CVD) growth process.	
Type IIa	



© IGI 2020, International Gemological Institute

FD - 10 20



THIS DOCUMENT WAS PRODUCED WITH THE FOLLOWING SECURITY MEASURES: SPECIAL DOCUMENT PAPER, INK SCREENS, WATERMARK, BACKGROUND DESIGNS, HOLOGRAM AND OTHER SECURITY FEATURES NOT LISTED AND DO EXCEED DOCUMENT SECURITY INDUSTRY GUIDELINES

September 5, 2026	Carat Weight	3.18 CARATS
GI Report No. LG79250598	Color Grade	G
HEXAGONAL MODIFIED BRILLIANT	Clarity Grade	VVS 2
14.05 X 6.91 X 4.82 MM	Depth	69.8%
	Table	63%
	Girdle	THICK
	Culet	Pointed
	Polish	EXCELLENT
	Symmetry	EXCELLENT
	Fluorescence	NONE
	Inscriptions(s)	681 LG79250598

Comments:

This Laboratory Grown Diamond was created by Chemical Vapor Deposition (CVD) growth process.

Type IId

Comments:
This Laboratory Grown Diamond was
created by Chemical Vapor Deposition
(CVD) growth process.

www.igi.org