



ELECTRONIC COPY

LG732503088
Report verification at igi.org



September 13, 2025

IGI Report Number **LG732503088**

Description **LABORATORY GROWN DIAMOND**

Shape and Cutting Style **HEART BRILLIANT**

Measurements **15.92 X 18.83 X 11.37 MM**

GRADING RESULTS

Carat Weight **21.01 CARATS**

Color Grade **FANCY VIVID PINK**

Clarity Grade **VS 1**

September 13, 2025
IGI Report Number **LG732503088**
Description **LABORATORY GROWN DIAMOND**
Shape and Cutting Style **HEART BRILLIANT**
Measurements **15.92 X 18.83 X 11.37 MM**

GRADING RESULTS

Carat Weight **21.01 CARATS**

Color Grade **FANCY VIVID PINK**

Clarity Grade **VS 1**

ADDITIONAL GRADING INFORMATION

Polish **EXCELLENT**

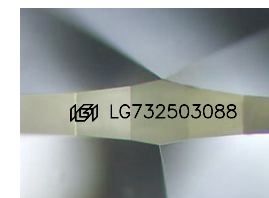
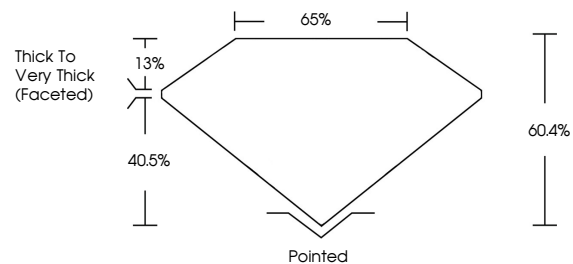
Symmetry **EXCELLENT**

Fluorescence **STRONG**

Inscription(s) **LG732503088**

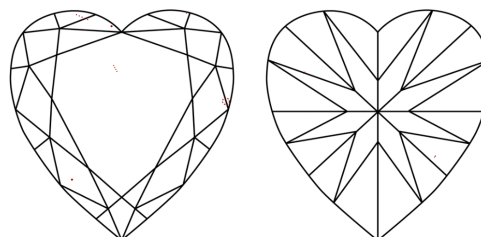
Comments: This Laboratory Grown Diamond was created by Chemical Vapor Deposition (CVD) growth process. Indications of post-growth treatment.

PROPORTIONS



Sample Image Used

CLARITY CHARACTERISTICS



KEY TO SYMBOLS

Red symbols indicate internal characteristics.
Green symbols indicate external characteristics.

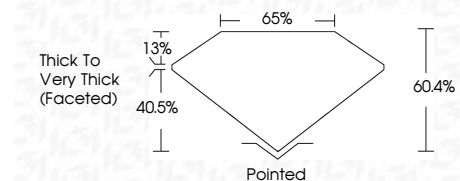
COLOR

D E F G H I J Faint Very Light Light

CLARITY

IF VS¹⁻² VS¹⁻² SI¹⁻² I¹⁻³

Internally Flawless Very Very Slightly Included Very Slightly Included Slightly Included Included



ADDITIONAL GRADING INFORMATION

Polish **EXCELLENT**

Symmetry **EXCELLENT**

Fluorescence **STRONG**

Inscription(s) **LG732503088**

Comments: This Laboratory Grown Diamond was created by Chemical Vapor Deposition (CVD) growth process. Indications of post-growth treatment.



IGI

September 13, 2025	IGI Report No LG732503088	HEART BRILLIANT	21.01 CARATS	FANCY VIVID PINK	VS 1	60.4%	65%	Thick to Very Thick (Faceted)	Pointed	Polish EXCELLENT	Symmetry EXCELLENT	Fluorescence STRONG	Inscription(s) LG732503088
--------------------	---------------------------	-----------------	--------------	------------------	------	-------	-----	-------------------------------	---------	------------------	--------------------	---------------------	-----------------------------

Comments: This Laboratory Grown Diamond was created by Chemical Vapor Deposition (CVD) growth process. Indications of post-growth treatment.