



ELECTRONIC COPY

LG732501619
Report verification at igi.org



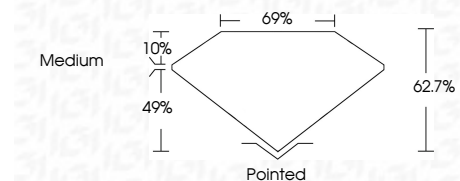
September 2, 2025
IGI Report Number LG732501619
Description LABORATORY GROWN DIAMOND

Shape and Cutting Style CUT CORNERED RECTANGULAR MODIFIED BRILLIANT

Measurements 14.88 X 9.87 X 6.19 MM

GRADING RESULTS

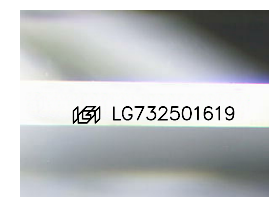
Carat Weight 7.73 CARATS
Color Grade F
Clarity Grade VS 1



ADDITIONAL GRADING INFORMATION

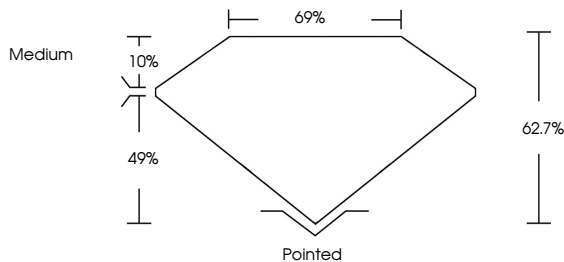
Polish EXCELLENT
Symmetry EXCELLENT
Fluorescence NONE

Inscription(s) IGI LG732501619
Comments: This Laboratory Grown Diamond was created by Chemical Vapor Deposition (CVD) growth process. Type IIa

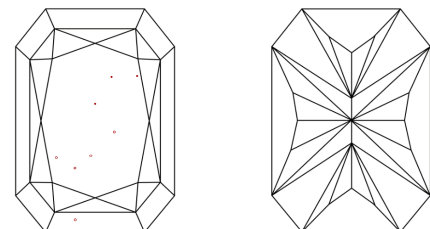


Sample Image Used

PROPORTIONS



CLARITY CHARACTERISTICS



KEY TO SYMBOLS

Red symbols indicate internal characteristics.
Green symbols indicate external characteristics.

COLOR

D E F G H I J Faint Very Light Light

CLARITY

IF WS 1-2 VS 1-2 SI 1-2 I 1-3
Internally Flawless Very Very Slightly Included Very Slightly Included Slightly Included Included



September 2, 2025
IGI Report No LG732501619
CUT CORNERED RECT. MODIFIED BRILLIANT
14.88 X 9.87 X 6.19 MM
7.73 CARATS
F
VS 1
62.7%
69%
Medium
Pointed
EXCELLENT
EXCELLENT
NONE
IGI LG732501619
Comments: This Laboratory Grown Diamond was created by Chemical Vapor Deposition (CVD) growth process. Type IIa