



September 2, 2025

IGI Report Number **LG732501188**

**ROUND BRILLIANT  
LABORATORY GROWN DIAMOND  
5.04 - 5.08 X 3.12 MM**

|                |                        |
|----------------|------------------------|
| Carat Weight   | <b>0.49 CARAT</b>      |
| Color Grade    | <b>E</b>               |
| Clarity Grade  | <b>VS 2</b>            |
| Cut Grade      | <b>IDEAL</b>           |
| Polish         | <b>EXCELLENT</b>       |
| Symmetry       | <b>EXCELLENT</b>       |
| Fluorescence   | <b>NONE</b>            |
| Inscription(s) | <b>IGI LG732501188</b> |

Comments: This Laboratory Grown Diamond was created by Chemical Vapor Deposition (CVD) growth process. Type IIa

**LABORATORY GROWN DIAMOND REPORT**

September 2, 2025  
IGI Report Number **LG732501188**  
Description **LABORATORY GROWN DIAMOND**  
Shape and Cutting Style **ROUND BRILLIANT**  
Measurements **5.04 - 5.08 X 3.12 MM**

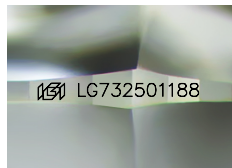
**GRADING RESULTS**

Carat Weight **0.49 CARAT**  
Color Grade **E**  
Clarity Grade **VS 2**  
Cut Grade **IDEAL**

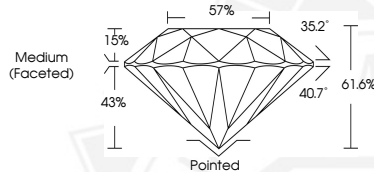
**ADDITIONAL GRADING INFORMATION**

Polish **EXCELLENT**  
Symmetry **EXCELLENT**  
Fluorescence **NONE**  
Inscription(s) **IGI LG732501188**

Comments: This Laboratory Grown Diamond was created by Chemical Vapor Deposition (CVD) growth process.  
Type IIa



Sample Image Used



September 2, 2025

IGI Report Number **LG732501188**

**ROUND BRILLIANT  
LABORATORY GROWN DIAMOND  
5.04 - 5.08 X 3.12 MM**

|                |                        |
|----------------|------------------------|
| Carat Weight   | <b>0.49 CARAT</b>      |
| Color Grade    | <b>E</b>               |
| Clarity Grade  | <b>VS 2</b>            |
| Cut Grade      | <b>IDEAL</b>           |
| Polish         | <b>EXCELLENT</b>       |
| Symmetry       | <b>EXCELLENT</b>       |
| Fluorescence   | <b>NONE</b>            |
| Inscription(s) | <b>IGI LG732501188</b> |

Comments: This Laboratory Grown Diamond was created by Chemical Vapor Deposition (CVD) growth process. Type IIa



THIS DOCUMENT WAS PRODUCED WITH THE FOLLOWING SECURITY MEASURES: SPECIAL DOCUMENT PAPER, INK SCREENS, WATERMARK, BACKGROUND DESIGNS, HOLOGRAM AND OTHER SECURITY FEATURES NOT LISTED AND DO EXCEED DOCUMENT SECURITY INDUSTRY GUIDELINES.