



ELECTRONIC COPY

LG731590992
Report verification at igi.org



September 3, 2025

IGI Report Number **LG731590992**

Description **LABORATORY GROWN DIAMOND**

Shape and Cutting Style **CUT CORNERED
RECTANGULAR MODIFIED
BRILLIANT**

Measurements **12.51 X 9.04 X 5.44 MM**

GRADING RESULTS

Carat Weight **5.53 CARATS**

Color Grade **F**

Clarity Grade **VS 1**

LABORATORY GROWN DIAMOND REPORT

September 3, 2025

IGI Report Number **LG731590992**

Description **LABORATORY GROWN DIAMOND**

Shape and Cutting Style **CUT CORNERED RECTANGULAR
MODIFIED BRILLIANT**

Measurements **12.51 X 9.04 X 5.44 MM**

GRADING RESULTS

Carat Weight **5.53 CARATS**

Color Grade **F**

Clarity Grade **VS 1**

ADDITIONAL GRADING INFORMATION

Polish **EXCELLENT**

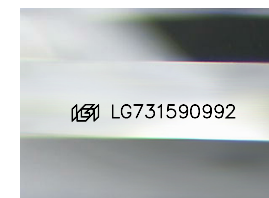
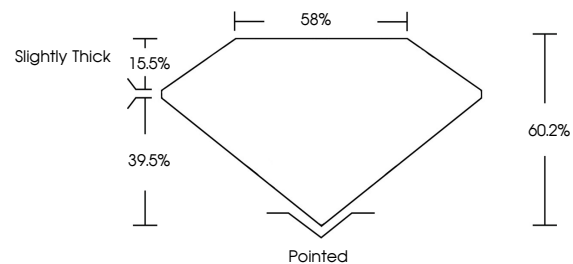
Symmetry **EXCELLENT**

Fluorescence **NONE**

Inscription(s) **IGI LG731590992**

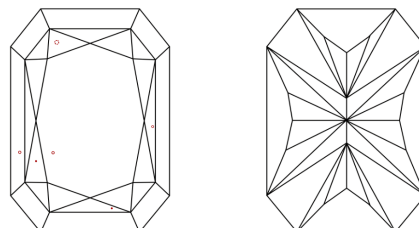
Comments: This Laboratory Grown Diamond was created by Chemical Vapor Deposition (CVD) growth process.
Type IIa

PROPORTIONS



Sample Image Used

CLARITY CHARACTERISTICS



KEY TO SYMBOLS

Red symbols indicate internal characteristics.
Green symbols indicate external characteristics.

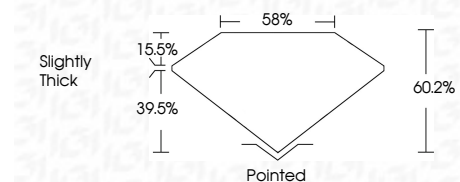
COLOR

D E F G H I J Faint Very Light Light

CLARITY

IF WS¹⁻² VS¹⁻² SI¹⁻² I¹⁻³

Internally Flawless Very Very Slightly Included Very Slightly Included Slightly Included Included



ADDITIONAL GRADING INFORMATION

Polish **EXCELLENT**

Symmetry **EXCELLENT**

Fluorescence **NONE**

Inscription(s) **IGI LG731590992**

Comments: This Laboratory Grown Diamond was created by Chemical Vapor Deposition (CVD) growth process.
Type IIa



IGI



September 3, 2025
IGI Report No LG731590992
CUT CORNERED RECT. MODIFIED BRILLIANT
12.51 X 9.04 X 5.44 MM
5.53 CARATS
F
VS 1
60.2%
39.5%
Slightly Thick
Pointed
EXCELLENT
EXCELLENT
NONE
IGI LG731590992

Comments: This Laboratory Grown Diamond was created by Chemical Vapor Deposition (CVD) growth process.
Type IIa