



ELECTRONIC COPY

LG731585705
Report verification at igi.org



September 11, 2025

IGI Report Number **LG731585705**

Description **LABORATORY GROWN DIAMOND**

Shape and Cutting Style **ROUND BRILLIANT**

Measurements **6.74 - 6.80 X 4.23 MM**

GRADING RESULTS

Carat Weight **1.22 CARAT**

Color Grade **FANCY VIVID PINK**

Clarity Grade **VS 1**

Cut Grade **EXCELLENT**

September 11, 2025
IGI Report Number **LG731585705**
Description **LABORATORY GROWN DIAMOND**
Shape and Cutting Style **ROUND BRILLIANT**
Measurements **6.74 - 6.80 X 4.23 MM**

GRADING RESULTS

Carat Weight **1.22 CARAT**

Color Grade **FANCY VIVID PINK**

Clarity Grade **VS 1**

Cut Grade **EXCELLENT**

ADDITIONAL GRADING INFORMATION

Polish **VERY GOOD**

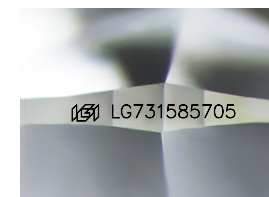
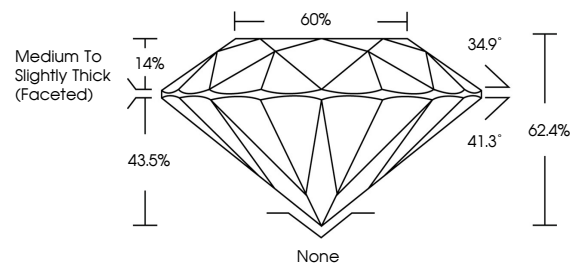
Symmetry **VERY GOOD**

Fluorescence **STRONG**

Inscription(s) **LG731585705**

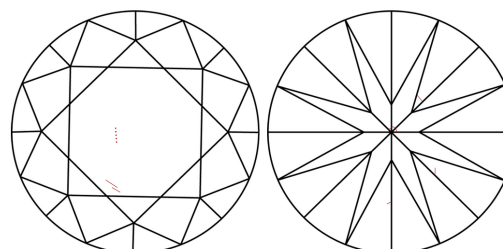
Comments: This Laboratory Grown Diamond was created by Chemical Vapor Deposition (CVD) growth process.
Indications of post-growth treatment.

PROPORTIONS



Sample Image Used

CLARITY CHARACTERISTICS



KEY TO SYMBOLS

Red symbols indicate internal characteristics.
Green symbols indicate external characteristics.

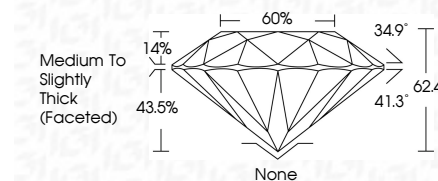
COLOR

D E F G H I J Faint Very Light Light

CLARITY

IF VS¹⁻² VS¹⁻² SI¹⁻² I¹⁻³

Internally Flawless Very Very Slightly Included Very Slightly Included Slightly Included Included



ADDITIONAL GRADING INFORMATION

Polish **VERY GOOD**

Symmetry **VERY GOOD**

Fluorescence **STRONG**

Inscription(s) **LG731585705**

Comments: This Laboratory Grown Diamond was created by Chemical Vapor Deposition (CVD) growth process.
Indications of post-growth treatment.



IGI



September 11, 2025	1.22 CARAT	None	None
IGI Report No LG731585705	FANCY VIVID PINK	VERY GOOD	VERY GOOD
ROUND BRILLIANT	VS 1	VERY GOOD	STRONG
6.74 - 6.80 X 4.23 MM	EXCELLENT	STRONG	STRONG
Color Grade	62.4%	Medium To Slightly Thick (Faceted)	IGI LG731585705
Clarity Grade	65%		
Cut Grade			
Depth			
Table			
Girdle			
Polish			
Symmetry			
Fluorescence			
Inscription(s)			

Comments: This Laboratory Grown Diamond was created by Chemical Vapor Deposition (CVD) growth process.
Indications of post-growth treatment.