



ELECTRONIC COPY

LG731585702
Report verification at igi.org



September 11, 2025
IGI Report Number **LG731585702**
Description **LABORATORY GROWN DIAMOND**
Shape and Cutting Style **ROUND BRILLIANT**
Measurements **6.66 - 6.72 X 4.08 MM**
GRADING RESULTS
Carat Weight **1.12 CARAT**
Color Grade **FANCY VIVID PINK**
Clarity Grade **VVS 2**
Cut Grade **EXCELLENT**

September 11, 2025
IGI Report Number **LG731585702**
Description **LABORATORY GROWN DIAMOND**
Shape and Cutting Style **ROUND BRILLIANT**
Measurements **6.66 - 6.72 X 4.08 MM**

GRADING RESULTS

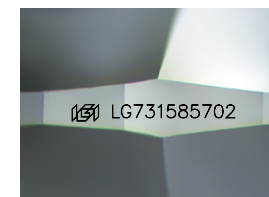
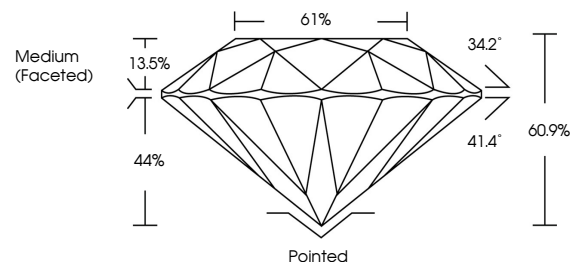
Carat Weight **1.12 CARAT**
Color Grade **FANCY VIVID PINK**
Clarity Grade **VVS 2**
Cut Grade **EXCELLENT**

ADDITIONAL GRADING INFORMATION

Polish **VERY GOOD**
Symmetry **VERY GOOD**
Fluorescence **STRONG**
Inscription(s) **LG731585702**

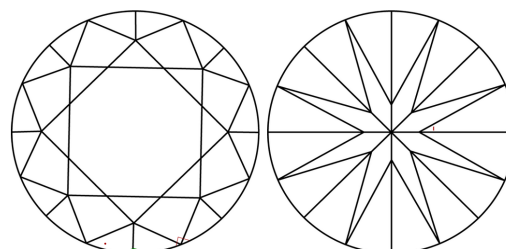
Comments: This Laboratory Grown Diamond was created by Chemical Vapor Deposition (CVD) growth process.
Indications of post-growth treatment.

PROPORTIONS



Sample Image Used

CLARITY CHARACTERISTICS



KEY TO SYMBOLS

Red symbols indicate internal characteristics.
Green symbols indicate external characteristics.

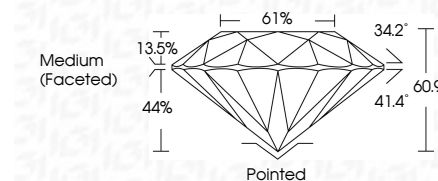
COLOR

D E F G H I J Faint Very Light Light

CLARITY

IF WS¹⁻² VS¹⁻² SI¹⁻² I¹⁻³

Internally Flawless Very Very Slightly Included Very Slightly Included Slightly Included Included



ADDITIONAL GRADING INFORMATION

Polish **VERY GOOD**
Symmetry **VERY GOOD**
Fluorescence **STRONG**
Inscription(s) **LG731585702**
Comments: This Laboratory Grown Diamond was created by Chemical Vapor Deposition (CVD) growth process.
Indications of post-growth treatment.



IGI



September 11, 2025
IGI Report No LG731585702
ROUND BRILLIANT
6.66 - 6.72 X 4.08 MM
1.12 CARAT
FANCY VIVID PINK
Color Grade
Clarity Grade
Depth
Table
Girdle
Medium (Faceted)
Culet
Polish
Symmetry
Fluorescence
Inscription(s)
Pointed
VERY GOOD
VERY GOOD
STRONG
EXCELLENT
60.9%
61%
IGI LG731585702
Comments: This Laboratory Grown Diamond was created by Chemical Vapor Deposition (CVD) growth process.
Indications of post-growth treatment.