



ELECTRONIC COPY

LABORATORY GROWN DIAMOND REPORT

September 5, 2025	
IGI Report Number	LG731585303
Description	LABORATORY GROWN DIAMOND
Shape and Cutting Style	ROUND BRILLIANT
Measurements	6.38 - 6.42 X 4.02 MM

GRADING RESULTS

Carat Weight	1.01 CARAT
Color Grade	F
Clarity Grade	SI 1
Cut Grade	EXCELLENT

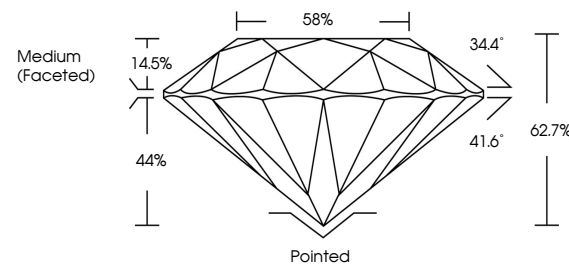
ADDITIONAL GRADING INFORMATION

Polish	EXCELLENT
Symmetry	EXCELLENT
Fluorescence	NONE
Inscription(s)	 LG731585303

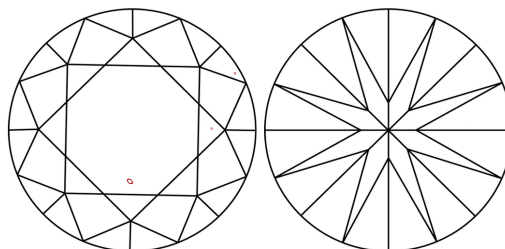
Comments: This Laboratory Grown Diamond was created by Chemical Vapor Deposition (CVD) growth process.
Type IIa

LG731585303
Report verification at igi.org

PROPORTIONS

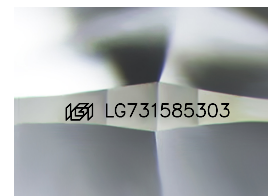


CLARITY CHARACTERISTICS



KEY TO SYMBOLS

Red symbols indicate internal characteristics.
Green symbols indicate external characteristics.



Sample Image Used

COLOR

D E F G H I J Faint Very Light Light

CLARITY

IF VS¹⁻² VS¹⁻² SI¹⁻² I¹⁻³

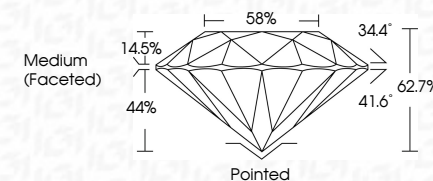
Internally Flawless	Very Very Slightly Included	Very Slightly Included	Slightly Included	Included
------------------------	--------------------------------	---------------------------	----------------------	----------




September 5, 2025	
IGI Report Number	LG731585303
Description	LABORATORY GROWN DIAMOND
Shape and Cutting Style	ROUND BRILLIANT
Measurements	6.38 - 6.42 X 4.02 MM

GRADING RESULTS

Carat Weight	1.01 CARAT
Color Grade	F
Clarity Grade	SI 1
Cut Grade	EXCELLENT



ADDITIONAL GRADING INFORMATION

Polish	EXCELLENT
Symmetry	EXCELLENT
Fluorescence	NONE
Inscription(s)	 LG731585303
<p>Comments: This Laboratory Grown Diamond was created by Chemical Vapor Deposition (CVD) growth process.</p> <p>Type IIa</p>	



© IGI 2020, International Gemological Institute

FD - 10 20

www.igi.org



THIS DOCUMENT WAS PRODUCED WITH THE FOLLOWING SECURITY MEASURES: SPECIAL DOCUMENT PAPER, INK SCREENS, WATERMARK BACKGROUND DESIGNS, HOLOGRAM AND OTHER SECURITY FEATURES NOT LISTED AND DO EXCEED DOCUMENT SECURITY INDUSTRY GUIDELINES

September 5, 2025
IGI Report No LG731585303

IGL Report No I6731585003	1.01 CARAT F	S11	EXCELLENT	62.7%	59%	Medium Faceted	Pinkish EXCELLENT	NONE
ROUND BRILLIANT	6.38 - 6.42 X 4.02 MM	Color Grade	Clarity Grade	Cut Grade	Depth	Table	Symmetry	Fluorescence
		Carat Weight	Carat Grade	Diamond Grade	Girdle	Culet	Polish	

Comments:
This Laboratory Grown Diamond was created by Chemical Vapor Deposition (CVD) growth process.