



ELECTRONIC COPY

LG731581217
Report verification at igi.org



September 5, 2025

IGI Report Number **LG731581217**

Description **LABORATORY GROWN DIAMOND**

Shape and Cutting Style **ROUND BRILLIANT**

Measurements **18.04 - 18.08 X 10.94 MM**

GRADING RESULTS

Carat Weight **22.04 CARATS**

Color Grade **F**

Clarity Grade **VS 1**

Cut Grade **IDEAL**

LABORATORY GROWN DIAMOND REPORT

September 5, 2025

IGI Report Number **LG731581217**

Description **LABORATORY GROWN DIAMOND**

Shape and Cutting Style **ROUND BRILLIANT**

Measurements **18.04 - 18.08 X 10.94 MM**

GRADING RESULTS

Carat Weight **22.04 CARATS**

Color Grade **F**

Clarity Grade **VS 1**

Cut Grade **IDEAL**

ADDITIONAL GRADING INFORMATION

Polish **EXCELLENT**

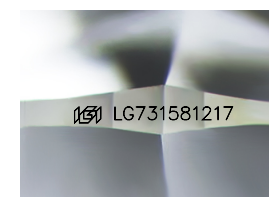
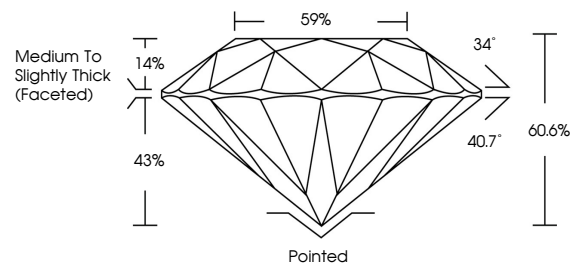
Symmetry **EXCELLENT**

Fluorescence **NONE**

Inscription(s) **IGI LG731581217**

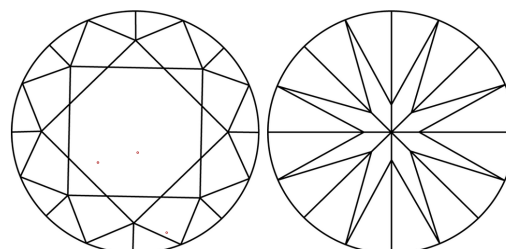
Comments: This Laboratory Grown Diamond was created by Chemical Vapor Deposition (CVD) growth process. Type IIa

PROPORTIONS



Sample Image Used

CLARITY CHARACTERISTICS



KEY TO SYMBOLS

Red symbols indicate internal characteristics.
Green symbols indicate external characteristics.

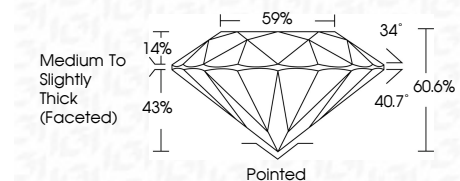
COLOR

D E F G H I J Faint Very Light Light

CLARITY

IF WS¹⁻² VS¹⁻² SI¹⁻² I¹⁻³

Internally Flawless Very Very Slightly Included Very Slightly Included Slightly Included Included



ADDITIONAL GRADING INFORMATION

Polish **EXCELLENT**

Symmetry **EXCELLENT**

Fluorescence **NONE**

Inscription(s) **IGI LG731581217**

Comments: This Laboratory Grown Diamond was created by Chemical Vapor Deposition (CVD) growth process. Type IIa



IGI



September 5, 2025
IGI Report No LG731581217
ROUND BRILLIANT

18.04 - 18.08 X 10.94 MM

22.04 CARATS
F

Color Grade
VS 1
IDEAL

Clarity Grade
VS 1
IDEAL

Depth
60.6%

Table
59%

Grade
Medium To Slightly Thick (Faceted)

Culet
Pointed
EXCELLENT

Polish
EXCELLENT

Symmetry
EXCELLENT

Fluorescence
NONE

Inscription(s)
IGI LG731581217

Comments: This Laboratory Grown Diamond was created by Chemical Vapor Deposition (CVD) growth process. Type IIa