



ELECTRONIC COPY

LG731579977
Report verification at igi.org



September 9, 2025
IGI Report Number **LG731579977**
Description **LABORATORY GROWN DIAMOND**
Shape and Cutting Style **ROUND BRILLIANT**
Measurements **6.84 - 6.87 X 4.28 MM**
GRADING RESULTS
Carat Weight **1.25 CARAT**
Color Grade **FANCY VIVID GREEN**
Clarity Grade **SI 1**
Cut Grade **EXCELLENT**

LABORATORY GROWN DIAMOND REPORT

September 9, 2025
IGI Report Number **LG731579977**
Description **LABORATORY GROWN DIAMOND**
Shape and Cutting Style **ROUND BRILLIANT**
Measurements **6.84 - 6.87 X 4.28 MM**

GRADING RESULTS

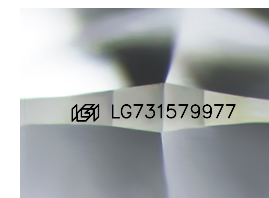
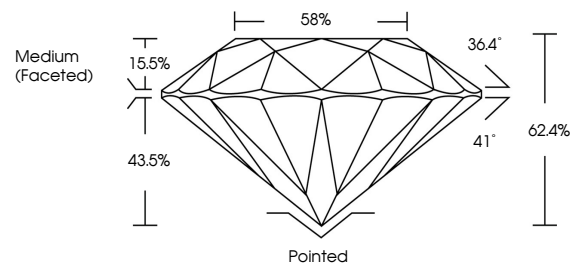
Carat Weight **1.25 CARAT**
Color Grade **FANCY VIVID GREEN**
Clarity Grade **SI 1**
Cut Grade **EXCELLENT**

ADDITIONAL GRADING INFORMATION

Polish **EXCELLENT**
Symmetry **EXCELLENT**
Fluorescence **NONE**
Inscription(s) **IGI LG731579977**

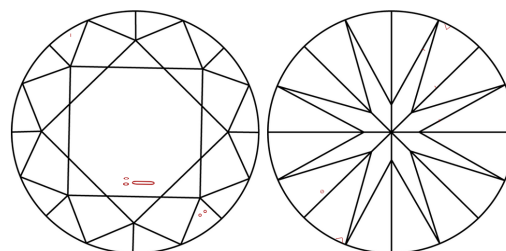
Comments: This Laboratory Grown Diamond was created by High Pressure High Temperature (HPHT) growth process.
Indications of post-growth treatment.

PROPORTIONS



Sample Image Used

CLARITY CHARACTERISTICS



KEY TO SYMBOLS

Red symbols indicate internal characteristics.
Green symbols indicate external characteristics.

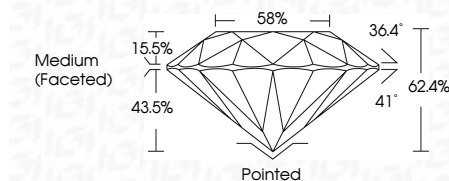
COLOR

D E F G H I J Faint Very Light Light

CLARITY

IF VS¹⁻² VS¹⁻² SI¹⁻² I¹⁻³

Internally Flawless Very Very Slightly Included Very Slightly Included Slightly Included Included



ADDITIONAL GRADING INFORMATION

Polish **EXCELLENT**
Symmetry **EXCELLENT**
Fluorescence **NONE**
Inscription(s) **IGI LG731579977**
Comments: This Laboratory Grown Diamond was created by High Pressure High Temperature (HPHT) growth process.
Indications of post-growth treatment.



IGI



September 9, 2025
IGI Report No LG731579977
ROUND BRILLIANT
6.84 - 6.87 X 4.28 MM
1.25 CARAT
FANCY VIVID GREEN
SI 1
EXCELLENT
62.4%
58%
Medium (Faceted)
Pointed
EXCELLENT
EXCELLENT
NONE
IGI LG731579977
Comments: This Laboratory Grown Diamond was created by High Pressure High Temperature (HPHT) growth process.
Indications of post-growth treatment.