



ELECTRONIC COPY

LG731579312
Report verification at igi.org



September 3, 2025
IGI Report Number **LG731579312**
Description **LABORATORY GROWN DIAMOND**
Shape and Cutting Style **OLD EUROPEAN CUT**
Measurements **6.61 - 6.64 X 4.12 MM**
GRADING RESULTS
Carat Weight **1.23 CARAT**
Color Grade **FANCY VIVID GREEN**
Clarity Grade **VVS 1**

September 3, 2025
IGI Report Number **LG731579312**
Description **LABORATORY GROWN DIAMOND**
Shape and Cutting Style **OLD EUROPEAN CUT**
Measurements **6.61 - 6.64 X 4.12 MM**

GRADING RESULTS

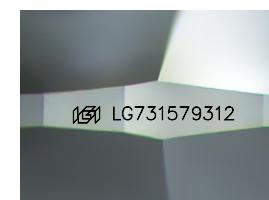
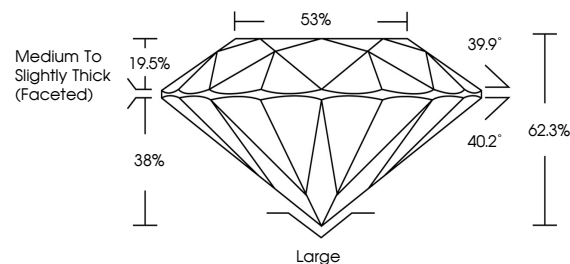
Carat Weight **1.23 CARAT**
Color Grade **FANCY VIVID GREEN**
Clarity Grade **VVS 1**

ADDITIONAL GRADING INFORMATION

Polish **EXCELLENT**
Symmetry **EXCELLENT**
Fluorescence **NONE**
Inscription(s) **IGI LG731579312**

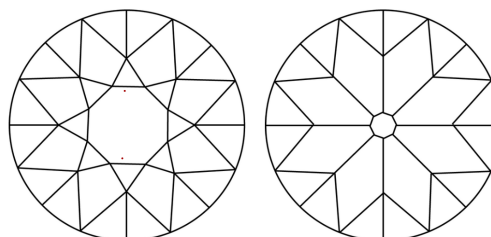
Comments: This Laboratory Grown Diamond was created by Chemical Vapor Deposition (CVD) growth process.
Indications of post-growth treatment.

PROPORTIONS



Sample Image Used

CLARITY CHARACTERISTICS



KEY TO SYMBOLS

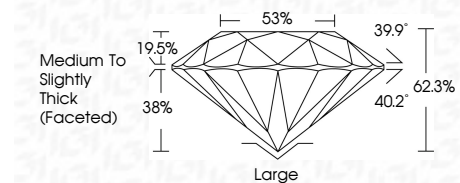
Red symbols indicate internal characteristics.
Green symbols indicate external characteristics.

COLOR

D E F G H I J Faint Very Light Light

CLARITY

IF	VS ¹⁻²	VS ¹⁻²	SI ¹⁻²	I ¹⁻³
Internally Flawless	Very Very Slightly Included	Very Slightly Included	Slightly Included	Included



ADDITIONAL GRADING INFORMATION

Polish **EXCELLENT**
Symmetry **EXCELLENT**
Fluorescence **NONE**
Inscription(s) **IGI LG731579312**
Comments: This Laboratory Grown Diamond was created by Chemical Vapor Deposition (CVD) growth process.
Indications of post-growth treatment.



September 3, 2025
IGI Report No LG731579312
OLD EUROPEAN CUT
6.61 - 6.64 X 4.12 MM
1.23 CARAT
FANCY VIVID GREEN
VVS 1
62.3%
38%
Medium to Slightly Thick (Faceted)
Large
EXCELLENT
EXCELLENT
NONE
IGI LG731579312
Comments: This Laboratory Grown Diamond was created by Chemical Vapor Deposition (CVD) growth process.
Indications of post-growth treatment.