



ELECTRONIC COPY

LABORATORY GROWN DIAMOND REPORT

September 3, 2025	
IGI Report Number	LG731578599
Description	LABORATORY GROWN DIAMOND
Shape and Cutting Style	ROUND BRILLIANT
Measurements	12.82 - 12.84 X 7.91 MM
GRADING RESULTS	
Carat Weight	8.09 CARATS
Color Grade	F
Clarity Grade	VVS 2
Cut Grade	IDEAL

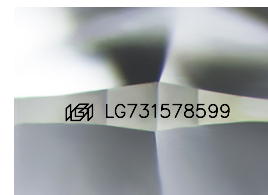
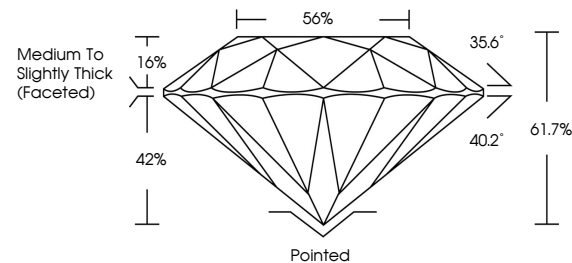
ADDITIONAL GRADING INFORMATION

Polish	EXCELLENT
Symmetry	EXCELLENT
Fluorescence	NONE
Inscription(s)	 LG731578599

Comments: This Laboratory Grown Diamond was created by Chemical Vapor Deposition (CVD) growth process.
Type IIa

LG731578599
Report verification at igi.org

PROPORTIONS



Sample Image Used

COLOR

D E F G H I J Faint Very Light Light

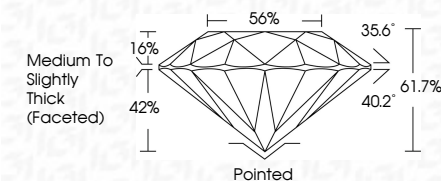
CLARITY

IF	VS ¹⁻²	VS ¹⁻²	SI ¹⁻²	I ¹⁻³
Internally Flawless	Very Very Slightly Included	Very Slightly Included	Slightly Included	Included

LABORATORY GROWN DIAMOND REPORT



September 3, 2025	
IGI Report Number	LG731578599
Description	LABORATORY GROWN DIAMOND
Shape and Cutting Style	ROUND BRILLIANT
Measurements	12.82 - 12.84 X 7.91 MM
GRADING RESULTS	
Carat Weight	8.09 CARATS
Color Grade	F
Clarity Grade	VVS 2
Cut Grade	IDEAL



ADDITIONAL GRADING INFORMATION

Polish	EXCELLENT
Symmetry	EXCELLENT
Fluorescence	NONE
Inscription(s)	 LG731578599
Comments: This Laboratory Grown Diamond was created by Chemical Vapor Deposition (CVD) growth process.	
Type IIa	



© IGI 2020, International Gemological Institute

FD - 10 20



THIS DOCUMENT WAS PRODUCED WITH THE FOLLOWING SECURITY MEASURES: SPECIAL DOCUMENT PAPER, INK SCREENS, WATERMARK, BACKGROUND DESIGNS, HOLOGRAM AND OTHER SECURITY FEATURES NOT LISTED AND DO EXCEED DOCUMENT SECURITY INDUSTRY GUIDELINES

www.igi.org

September 3, 2025
ICI Report No LG731578599
ROUND BRILLIANT

12.82	12.84 X 9.71 MM	Carat Weight	8.09 CARATS
	Color Grade		F
	Clarity Grade	VVS 2	
	Cut Grade	IDEAL	
	Depth	61.7%	
	Table	56%	
	Girdle	Medium to Slightly Thick (Faceted)	
	Culet	Pointed	
	Polish	Excellent	
	Symmetry	Excellent	
	Fluorescence	None	
	Inspection	None	

Comments:
This Laboratory Grown Diamond was created by Chemical Vapor Deposition (CVD) growth process.