



ELECTRONIC COPY

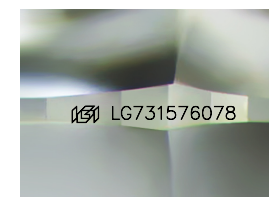
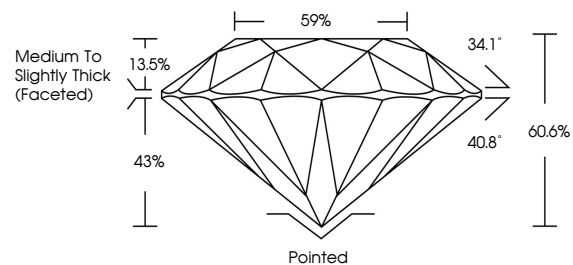
LG731576078
Report verification at igi.org



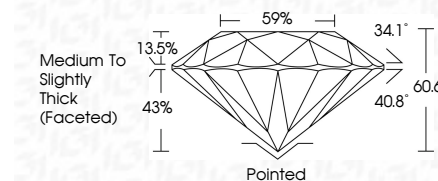
October 1, 2025
IGI Report Number **LG731576078**
Description **LABORATORY GROWN DIAMOND**
Shape and Cutting Style **ROUND BRILLIANT**
Measurements **9.52 - 9.56 X 5.78 MM**
GRADING RESULTS
Carat Weight **3.25 CARATS**
Color Grade **H**
Clarity Grade **VVS 2**
Cut Grade **IDEAL**

October 1, 2025
IGI Report Number **LG731576078**
Description **LABORATORY GROWN DIAMOND**
Shape and Cutting Style **ROUND BRILLIANT**
Measurements **9.52 - 9.56 X 5.78 MM**
GRADING RESULTS
Carat Weight **3.25 CARATS**
Color Grade **H**
Clarity Grade **VVS 2**
Cut Grade **IDEAL**

PROPORTIONS



Sample Image Used



ADDITIONAL GRADING INFORMATION
Polish **EXCELLENT**
Symmetry **EXCELLENT**
Fluorescence **NONE**
Inscription(s) **IGI LG731576078**

Comments: This Laboratory Grown Diamond was created by Chemical Vapor Deposition (CVD) growth process. Type IIa

COLOR

D E F G H I J Faint Very Light Light

CLARITY

FL	IF	VS ¹⁻²	VS ¹⁻²	SI ¹⁻²	I ¹⁻³
Flawless	Internally Flawless	Very Very Slightly Included	Very Slightly Included	Slightly Included	Included

ADDITIONAL GRADING INFORMATION

Polish **EXCELLENT**
Symmetry **EXCELLENT**
Fluorescence **NONE**
Inscription(s) **IGI LG731576078**
Comments: This Laboratory Grown Diamond was created by Chemical Vapor Deposition (CVD) growth process. Type IIa



IGI



October 1, 2025
IGI Report No LG731576078
ROUND BRILLIANT
9.52 - 9.56 X 5.78 MM
3.25 CARATS
H
VVS 2
IDEAL
60.6%
59%
Medium To Slightly Thick (Faceted)
Pointed
EXCELLENT
EXCELLENT
NONE
IGI LG731576078
Comments: This Laboratory Grown Diamond was created by Chemical Vapor Deposition (CVD) growth process. Type IIa