



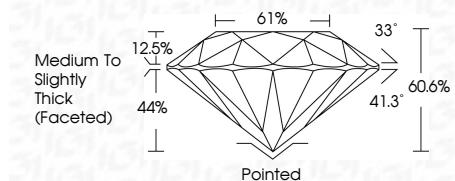
ELECTRONIC COPY

LG731575485
Report verification at igi.org



September 22, 2025
IGI Report Number LG731575485
Description LABORATORY GROWN DIAMOND
Shape and Cutting Style ROUND BRILLIANT
Measurements 8.70 - 8.77 X 5.30 MM

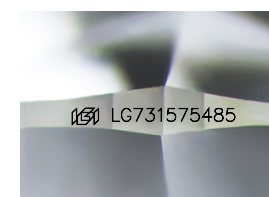
GRADING RESULTS
Carat Weight 2.51 CARATS
Color Grade F
Clarity Grade VS 1
Cut Grade EXCELLENT



ADDITIONAL GRADING INFORMATION
Polish EXCELLENT
Symmetry EXCELLENT
Fluorescence NONE
Inscription(s) IGI LG731575485
Comments: This Laboratory Grown Diamond was created by Chemical Vapor Deposition (CVD) growth process. Type IIa



September 22, 2025
IGI Report No LG731575485
ROUND BRILLIANT
8.70 - 8.77 X 5.30 MM
2.51 CARATS
F
EXCELLENT
VS 1
60.6%
61%
Medium To Slightly Thick (Faceted)
Pointed
EXCELLENT
EXCELLENT
NONE
IGI LG731575485
Comments: This Laboratory Grown Diamond was created by Chemical Vapor Deposition (CVD) growth process. Type IIa



Sample Image Used

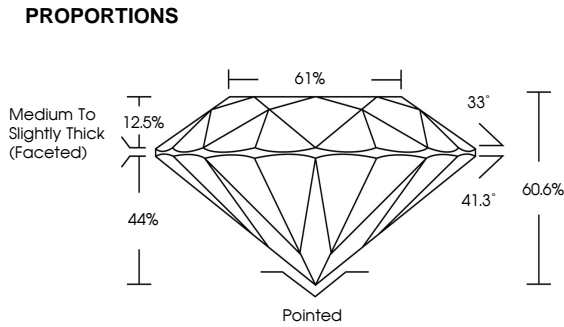


Table with 5 columns: D, E, F, G, H, I, J, Faint, Very Light, Light

Table with 5 columns: IF, VS 1-2, VS 1-2, SI 1-2, I 1-3
Internally Flawless, Very Very Slightly Included, Very Slightly Included, Slightly Included, Included

