



ELECTRONIC COPY

LABORATORY GROWN DIAMOND REPORT

LG731570099
Report verification at igi.org

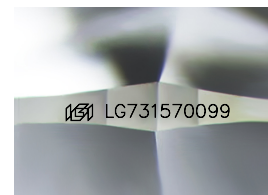
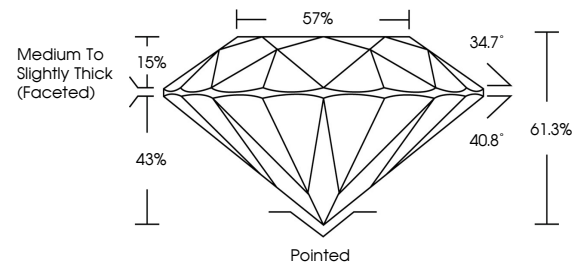
| | |
|-------------------------|--------------------------|
| September 3, 2025 | |
| IGI Report Number | LG731570099 |
| Description | LABORATORY GROWN DIAMOND |
| Shape and Cutting Style | ROUND BRILLIANT |
| Measurements | 9.31 - 9.34 X 5.71 MM |
| GRADING RESULTS | |
| Carat Weight | 3.05 CARATS |
| Color Grade | D |
| Clarity Grade | VS 1 |
| Cut Grade | IDEAL |

ADDITIONAL GRADING INFORMATION

| | |
|----------------|---|
| Polish | EXCELLENT |
| Symmetry | EXCELLENT |
| Fluorescence | NONE |
| Inscription(s) |  LG731570099 |

Comments: This Laboratory Grown Diamond was created by Chemical Vapor Deposition (CVD) growth process.
Type IIa

PROPORTIONS



Sample Image Used

COLOR

D E F G H I J Faint Very Light Light

CLARITY

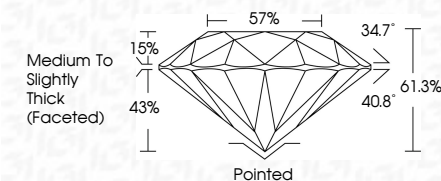
IF VWS¹⁻² VS¹⁻² SI¹⁻² I¹⁻³

| | | | | |
|------------------------|--------------------------------|---------------------------|----------------------|----------|
| Internally Flawless | Very Very Slightly Included | Very Slightly Included | Slightly Included | Included |
|------------------------|--------------------------------|---------------------------|----------------------|----------|

LABORATORY GROWN DIAMOND REPORT



| | |
|-------------------------|--------------------------|
| September 3, 2025 | |
| IGI Report Number | LG731570099 |
| Description | LABORATORY GROWN DIAMOND |
| Shape and Cutting Style | ROUND BRILLIANT |
| Measurements | 9.31 - 9.34 X 5.71 MM |
| GRADING RESULTS | |
| Carat Weight | 3.05 CARATS |
| Color Grade | D |
| Clarity Grade | VS 1 |
| Cut Grade | IDEAL |



ADDITIONAL GRADING INFORMATION

| | |
|--|---|
| Polish | EXCELLENT |
| Symmetry | EXCELLENT |
| Fluorescence | NONE |
| Inscription(s) |  LG731570099 |
| Comments: This Laboratory Grown Diamond was created by Chemical Vapor Deposition (CVD) growth process. | |
| Type IIa | |



IG



© IGI 2020, International Gemological Institute

FD - 10 20



THIS DOCUMENT WAS PRODUCED WITH THE FOLLOWING SECURITY MEASURES: SPECIAL DOCUMENT PAPER, INK SCREENS, WATERMARK, BACKGROUND DESIGNS, HOLOGRAM AND OTHER SECURITY FEATURES NOT LISTED AND DO EXCEED DOCUMENT SECURITY INDUSTRY GUIDELINES

www.igi.org

September 3, 2025
ICI Report No LG731570099
ROUND BRILLIANT

| | | | | | | | | | | | | |
|------------------------|-------------|-------------|---------------|-----------|-------|-------|------------------------------------|----------|-----------|-----------|--------------|-----------------|
| 93.31 - 93.4 X 5.71 MM | 3.05 CARATS | D | VS1 | IDEAL | 61.3% | 57% | Medium to Slightly Thick (Faceted) | Polished | EXCELLENT | EXCELLENT | NONE | cert G731571009 |
| Carat Weight | | Color Grade | Clarity Grade | Cut Grade | Depth | Table | Grade | Culet | Polish | Symmetry | Fluorescence | Inscription(s) |

Comments:
This Laboratory Grown Diamond was
created by Chemical Vapor Deposition
(CVD) growth process.