

ELECTRONIC COPY

LABORATORY GROWN DIAMOND REPORT

September 5, 2025	
IGI Report Number	LG731566579
Description	LABORATORY GROWN DIAMOND
Shape and Cutting Style	EMERALD CUT
Measurements	8.66 X 6.11 X 3.88 MM

GRADING RESULTS

Carat Weight	2.06 CARATS
Color Grade	D
Clarity Grade	INTERNALLY FLAWLESS

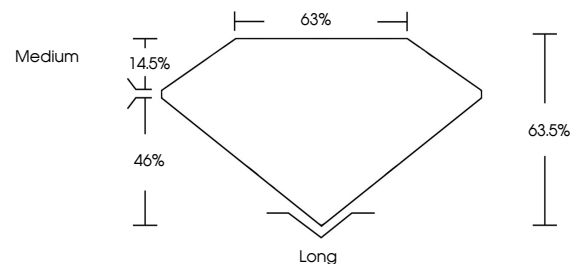
ADDITIONAL GRADING INFORMATION

Polish	EXCELLENT
Symmetry	EXCELLENT
Fluorescence	NONE
Inscription(s)	 LG731566579

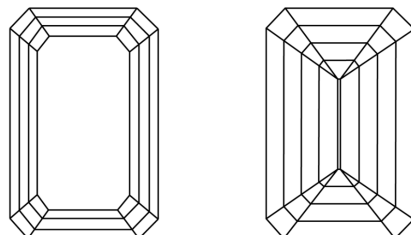
Comments: As Grown - No indication of post-growth treatment.
This Laboratory Grown Diamond was created by High Pressure High Temperature (HPHT) growth process.
Type II

LG731566579
Report verification at igi.org

PROPORTIONS

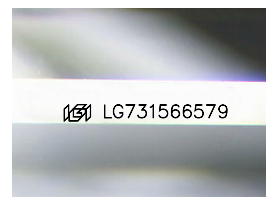


CLARITY CHARACTERISTICS



KEY TO SYMBOLS

Red symbols indicate internal characteristics.
Green symbols indicate external characteristics.



Sample Image Used

COLOR

D E F G H I J Faint Very Light Light

CLARITY

IF	VS ¹⁻²	VS ¹⁻²	SI ¹⁻²	I ¹⁻³
Internally Flawless	Very Very Slightly Included	Very Slightly Included	Slightly Included	Included

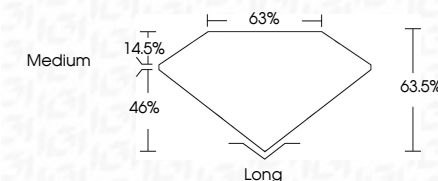
LABORATORY GROWN DIAMOND REPORT



September 5, 2025	
IGI Report Number	LG731566579
Description	LABORATORY GROWN DIAMOND
Shape and Cutting Style	EMERALD CUT
Measurements	8.66 X 6.11 X 3.88 MM
GRADING RESULTS	
Carat Weight	2.06 CARATS
Color Grade	D
Clarity Grade	INTERNALLY FLAWLESS

ADDITIONAL GRADING INFORMATION

Polish	EXCELLENT
Symmetry	EXCELLENT
Fluorescence	NONE
Inscription(s)	(G) LG731566579
<p>Comments: As Grown - No indication of post-growth treatment.</p> <p>This Laboratory Grown Diamond was created by High Pressure High Temperature (HPHT) growth process.</p> <p>Type II</p>	



September 5, 2025
GI Report No LG731566579

GI Report No	G179156579	
Carat Weight	2.06 CARATS	
Color Grade	D	
Clarity Grade	I.F	
Depth	63.0%	
Table	63%	
Girdle	Medium	
Culet	Long	
Polish	EXCELLENT	
Symmetry	EXCELLENT	
Fluorescence	NONE	
Annotations(s)	See G179156579	

Comments:
As Grown - No indication of post-growth treatment.
This Laboratory Grown Diamond was created by High Pressure High temperature (HPHT) growth process.