



**ELECTRONIC COPY**

## LABORATORY GROWN DIAMOND REPORT

LG731558613  
Report verification at [igi.org](https://igi.org)

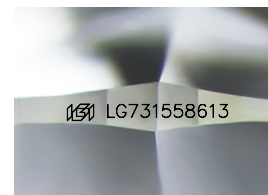
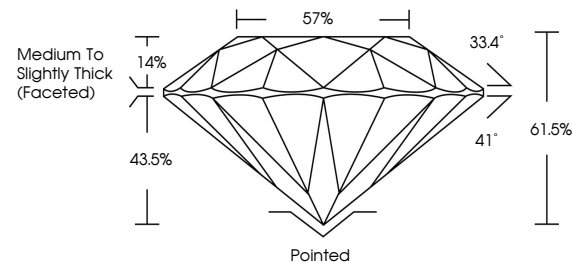
August 29, 2025	
IGI Report Number	LG731558613
Description	LABORATORY GROWN DIAMOND
Shape and Cutting Style	ROUND BRILLIANT
Measurements	9.28 - 9.32 X 5.72 MM
GRADING RESULTS	
Carat Weight	3.04 CARATS
Color Grade	E
Clarity Grade	VVS 2
Cut Grade	IDEAL

### ADDITIONAL GRADING INFORMATION

Polish	EXCELLENT
Symmetry	EXCELLENT
Fluorescence	NONE
Inscription(s)	15 LG731558613

Comments: This Laboratory Grown Diamond was created by Chemical Vapor Deposition (CVD) growth process.  
Type IIa

## PROPORTIONS



Sample Image Used

## COLOR

D E F G H I J Faint Very Light Light

## CLARITY

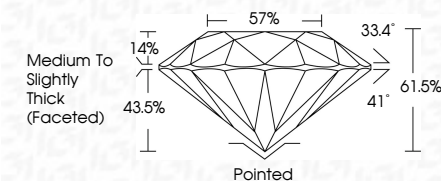
IF                      VS<sup>1-2</sup>                      VS<sup>1-2</sup>                      S<sup>1-2</sup>                      |<sup>1-3</sup>

Internally Flawless	Very Very Slightly Included	Very Slightly Included	Slightly Included	Included
------------------------	--------------------------------	---------------------------	----------------------	----------

## LABORATORY GROWN DIAMOND REPORT



August 29, 2025	
IGI Report Number	LG731558613
Description	LABORATORY GROWN DIAMOND
Shape and Cutting Style	ROUND BRILLIANT
Measurements	9.28 - 9.32 X 5.72 MM
GRADING RESULTS	
Carat Weight	3.04 CARATS
Color Grade	E
Clarity Grade	VVS 2
Cut Grade	IDEAL



### ADDITIONAL GRADING INFORMATION

Polish	EXCELLENT
Symmetry	EXCELLENT
Fluorescence	NONE
Inscription(s)	 LG731558613
Comments: This Laboratory Grown Diamond was created by Chemical Vapor Deposition (CVD) growth process.	
Type IIa	



© IGI 2020, International Gemological Institute

FD - 10 20



THIS DOCUMENT WAS PRODUCED WITH THE FOLLOWING SECURITY MEASURES: SPECIAL DOCUMENT PAPER, INK SCREENS, WATERMARK, BACKGROUND DESIGNS, HOLOGRAM AND OTHER SECURITY FEATURES NOT LISTED AND DO EXCEED DOCUMENT SECURITY INDUSTRY GUIDELINES

**www.igi.org**

August 29, 2025  
GI Report No LG731558613  
ROUND BRILLIANT

<b>G Report No</b>	<b>L67931659613</b>	
<b>ROUND BRILLIANT</b>		
<b>28-28 - 9.32 X 5.72 MM</b>		
<b>Carat Weight</b>		
<b>Color Grade</b>		<b>3.04 CARATS</b>
<b>Clarity Grade</b>		<b>VVS 2</b>
<b>Cut Grade</b>		<b>IDEAL</b>
<b>Depth</b>		<b>61.5%</b>
<b>Table</b>		<b>57%</b>
<b>Girdle</b>		<b>Medium to slightly Thick Faceted</b>
<b>Culet</b>		<b>Pointed</b>
<b>Poleish</b>		<b>EXCELLENT</b>
<b>Symmetry</b>		<b>EXCELLENT</b>
<b>Fluorescence</b>		<b>NONE</b>
<b>Inclusions(e)s</b>		<b>see L67931659613</b>

**Comments:**  
This Laboratory Grown Diamond was created by Chemical Vapor Deposition (CVD) growth process.