



ELECTRONIC COPY

LG731558463
Report verification at igi.org



August 29, 2025
IGI Report Number **LG731558463**
Description **LABORATORY GROWN DIAMOND**
Shape and Cutting Style **CUT CORNERED
RECTANGULAR MODIFIED
BRILLIANT**

Measurements **10.93 X 7.52 X 5.41 MM**

GRADING RESULTS

Carat Weight **3.90 CARATS**
Color Grade **E**
Clarity Grade **VS 2**

August 29, 2025
IGI Report Number **LG731558463**
Description **LABORATORY GROWN DIAMOND**
Shape and Cutting Style **CUT CORNERED RECTANGULAR
MODIFIED BRILLIANT**
Measurements **10.93 X 7.52 X 5.41 MM**

GRADING RESULTS

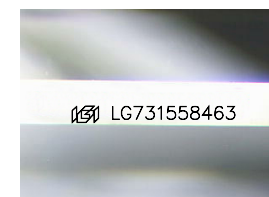
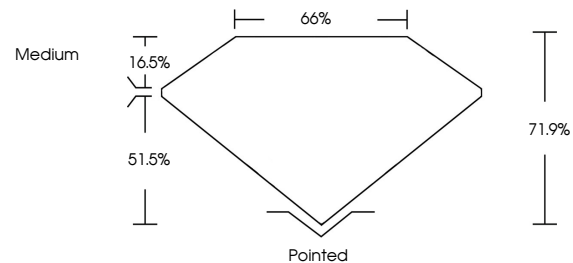
Carat Weight **3.90 CARATS**
Color Grade **E**
Clarity Grade **VS 2**

ADDITIONAL GRADING INFORMATION

Polish **EXCELLENT**
Symmetry **EXCELLENT**
Fluorescence **NONE**
Inscription(s) **IGI LG731558463**

Comments: This Laboratory Grown Diamond was created by Chemical Vapor Deposition (CVD) growth process. Type IIa

PROPORTIONS



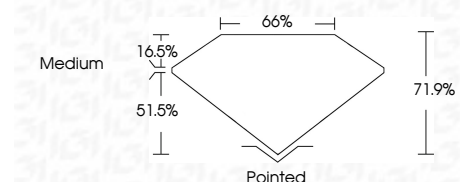
Sample Image Used

COLOR

D E F G H I J Faint Very Light Light

CLARITY

IF	VS ¹⁻²	VS ¹⁻²	SI ¹⁻²	I ¹⁻³
Internally Flawless	Very Very Slightly Included	Very Slightly Included	Slightly Included	Included



ADDITIONAL GRADING INFORMATION

Polish **EXCELLENT**
Symmetry **EXCELLENT**
Fluorescence **NONE**
Inscription(s) **IGI LG731558463**
Comments: This Laboratory Grown Diamond was created by Chemical Vapor Deposition (CVD) growth process. Type IIa



August 29, 2025
IGI Report No LG731558463
CUT CORNERED RECT. MODIFIED BRILLIANT
3.90 CARATS
E
71.9%
66%
Medium
Pointed
EXCELLENT
EXCELLENT
NONE
IGI LG731558463
Comments: This Laboratory Grown Diamond was created by Chemical Vapor Deposition (CVD) growth process. Type IIa