



ELECTRONIC COPY

LG731558287
Report verification at igi.org



September 9, 2025

IGI Report Number **LG731558287**

Description **LABORATORY GROWN DIAMOND**

Shape and Cutting Style **CUSHION BRILLIANT**

Measurements **11.43 X 7.90 X 5.32 MM**

GRADING RESULTS

Carat Weight **3.75 CARATS**

Color Grade **FANCY INTENSE PINK**

Clarity Grade **VS 1**

LABORATORY GROWN DIAMOND REPORT

September 9, 2025

IGI Report Number **LG731558287**

Description **LABORATORY GROWN DIAMOND**

Shape and Cutting Style **CUSHION BRILLIANT**

Measurements **11.43 X 7.90 X 5.32 MM**

GRADING RESULTS

Carat Weight **3.75 CARATS**

Color Grade **FANCY INTENSE PINK**

Clarity Grade **VS 1**

ADDITIONAL GRADING INFORMATION

Polish **EXCELLENT**

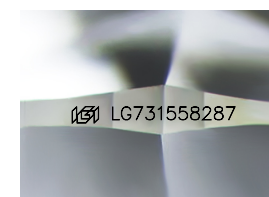
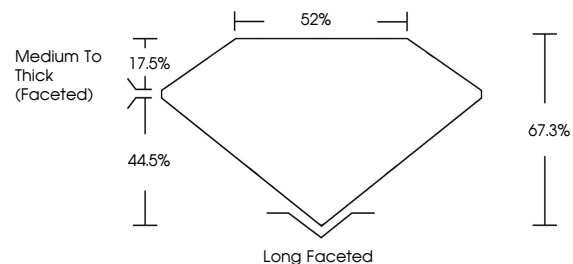
Symmetry **EXCELLENT**

Fluorescence **STRONG**

Inscription(s) **LG731558287**

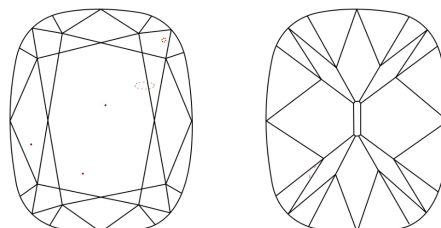
Comments: This Laboratory Grown Diamond was created by Chemical Vapor Deposition (CVD) growth process. Indications of post-growth treatment.

PROPORTIONS



Sample Image Used

CLARITY CHARACTERISTICS



KEY TO SYMBOLS

Red symbols indicate internal characteristics.
Green symbols indicate external characteristics.

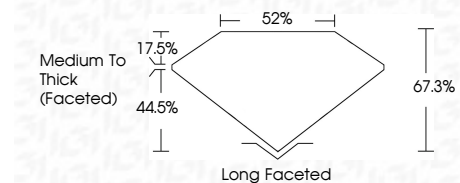
COLOR

D E F G H I J Faint Very Light Light

CLARITY

IF VS¹⁻² VS¹⁻² SI¹⁻² I¹⁻³

Internally Flawless Very Very Slightly Included Very Slightly Included Slightly Included Included



ADDITIONAL GRADING INFORMATION

Polish **EXCELLENT**

Symmetry **EXCELLENT**

Fluorescence **STRONG**

Inscription(s) **LG731558287**

Comments: This Laboratory Grown Diamond was created by Chemical Vapor Deposition (CVD) growth process. Indications of post-growth treatment.



September 9, 2025	3.75 CARATS	VS 1
IGI Report No LG731558287	FANCY INTENSE PINK	67.3%
CUSHION BRILLIANT	Medium To Thick (Faceted)	52%
11.43 X 7.90 X 5.32 MM	Long Faceted	
Carat Weight	EXCELLENT	
Color Grade	EXCELLENT	
Clarity Grade	STRONG	
Depth		LG731558287
Table		
Girdle		
Culet		
Polish		
Symmetry		
Fluorescence		
Inscription(s)		

Comments: This Laboratory Grown Diamond was created by Chemical Vapor Deposition (CVD) growth process. Indications of post-growth treatment.