

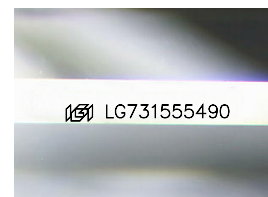
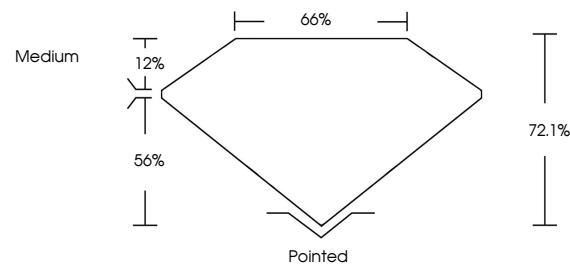


ELECTRONIC COPY

LABORATORY GROWN DIAMOND REPORT

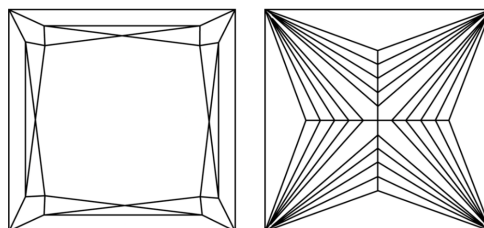
LG731555490
Report verification at igi.org

PROPORTIONS



Sample Image Used

CLARITY CHARACTERISTICS



KEY TO SYMBOLS

Red symbols indicate internal characteristics.
Green symbols indicate external characteristics.

COLOR

D E F G H I J Faint Very Light Light

CLARITY

IF VS¹⁻² VS¹⁻² SI¹⁻² I¹⁻³

Internally Flawless	Very Very Slightly Included	Very Slightly Included	Slightly Included	Included
------------------------	--------------------------------	---------------------------	----------------------	----------

LABORATORY GROWN DIAMOND REPORT



September 5, 2025

IGI Report Number **LG731555490**Description **LABORATORY GROWN DIAMOND**Shape and Cutting Style **PRINCESS CUT**

Measurements **6.83 X 6.78 X 4.89 MM**

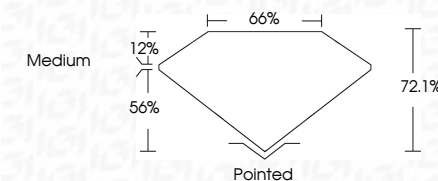
GRADING RESULTS

Carat Weight **2.02 CARATS**

Color Grade D

Clarity Grade **INTERNALLY FLAWLESS**

Cut Grade **EXCELLENT**



ADDITIONAL GRADING INFORMATION

Polish **EXCELLENT**Symmetry **EXCELLENT**Fluorescence **NONE**Inscription(s) LG731555490

Comments: As Grown - No indication of post-growth treatment.

This Laboratory Grown Diamond was created by High Pressure High Temperature (HPHT) growth process.
Type II



September 5, 2025	2.02 CARATS
IG Report No. LG731055490	
GRANITE CUT	
6.85 X 4.78 X 4.89 MM	
Carat Weight	D
Color Grade	2.02 CARATS
Clarity Grade	IF
Cut Grade	EXCELLENT
Depth	72.1%
Table	66%
Girdle	Medium
Fluorescence	Painted
Symmetry	EXCELLENT
Inscriptions(s)	NONE
	lg816731055490
Comments:	
As Grown: No indication of post-growth treatment.	
This Laboratory Grown Diamond was created by High Pressure High Temperature (HPHT) growth process.	
Type IIa	

