



ELECTRONIC COPY

LG731546212
Report verification at igi.org



September 5, 2025

IGI Report Number **LG731546212**

Description **LABORATORY GROWN DIAMOND**

Shape and Cutting Style **ROUND BRILLIANT**

Measurements **9.73 - 9.77 X 5.92 MM**

GRADING RESULTS

Carat Weight **3.50 CARATS**

Color Grade **FANCY INTENSE PINK**

Clarity Grade **VS 1**

Cut Grade **IDEAL**

September 5, 2025
IGI Report Number **LG731546212**
Description **LABORATORY GROWN DIAMOND**
Shape and Cutting Style **ROUND BRILLIANT**
Measurements **9.73 - 9.77 X 5.92 MM**

GRADING RESULTS

Carat Weight **3.50 CARATS**

Color Grade **FANCY INTENSE PINK**

Clarity Grade **VS 1**

Cut Grade **IDEAL**

ADDITIONAL GRADING INFORMATION

Polish **EXCELLENT**

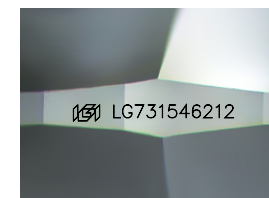
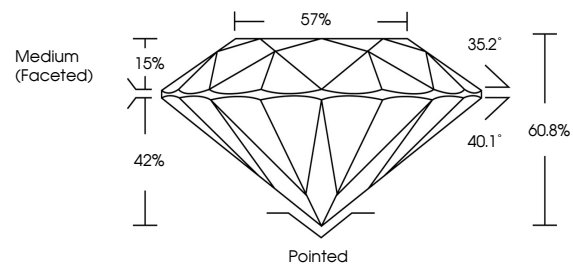
Symmetry **EXCELLENT**

Fluorescence **STRONG**

Inscription(s) **LG731546212**

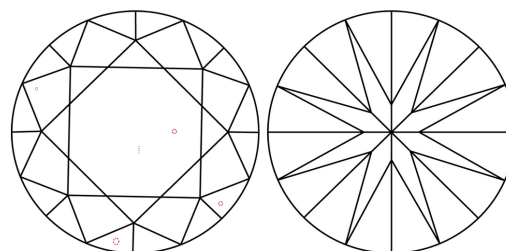
Comments: This Laboratory Grown Diamond was created by Chemical Vapor Deposition (CVD) growth process.
Indications of post-growth treatment.

PROPORTIONS



Sample Image Used

CLARITY CHARACTERISTICS



KEY TO SYMBOLS

Red symbols indicate internal characteristics.
Green symbols indicate external characteristics.

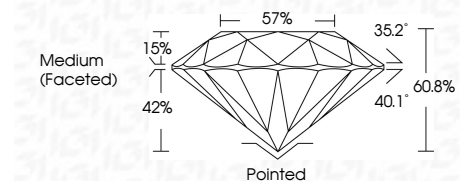
COLOR

D E F G H I J Faint Very Light Light

CLARITY

IF VS¹⁻² VS¹⁻² SI¹⁻² I¹⁻³

Internally Flawless Very Very Slightly Included Very Slightly Included Slightly Included Included



ADDITIONAL GRADING INFORMATION

Polish **EXCELLENT**

Symmetry **EXCELLENT**

Fluorescence **STRONG**

Inscription(s) **LG731546212**

Comments: This Laboratory Grown Diamond was created by Chemical Vapor Deposition (CVD) growth process.
Indications of post-growth treatment.



IGI



September 5, 2025
IGI Report No LG731546212
ROUND BRILLIANT

3.50 CARATS
Carat Weight
FANCY INTENSE PINK
Color Grade

VS 1
Clarity Grade
IDEAL
Cut Grade
60.8%
Depth
57%
Girdle
Medium (Faceted)

Pointed
Culet
EXCELLENT
Polish
EXCELLENT
Symmetry
EXCELLENT
Fluorescence
STRONG
Inscription(s)
 LG731546212

Comments: This Laboratory Grown Diamond was created by Chemical Vapor Deposition (CVD) growth process.
Indications of post-growth treatment.