



ELECTRONIC COPY

LG731545505
Report verification at igi.org



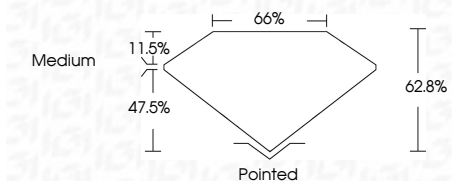
August 30, 2025
IGI Report Number **LG731545505**
Description **LABORATORY GROWN DIAMOND**

Shape and Cutting Style **CUT CORNERED
RECTANGULAR MODIFIED
BRILLIANT**

Measurements **12.99 X 8.78 X 5.51 MM**

GRADING RESULTS

Carat Weight **5.41 CARATS**
Color Grade **F**
Clarity Grade **VS 1**



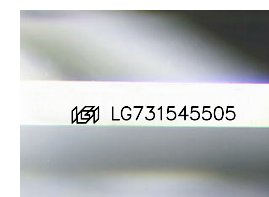
ADDITIONAL GRADING INFORMATION

Polish **EXCELLENT**
Symmetry **EXCELLENT**
Fluorescence **NONE**
Inscription(s) **(IGI) LG731545505**
Comments: This Laboratory Grown Diamond was created by Chemical Vapor Deposition (CVD) growth process. Type IIa



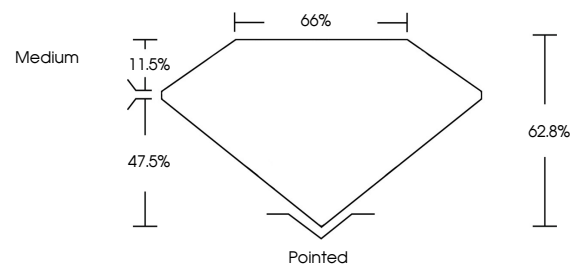
IGI

August 30, 2025
IGI Report No LG731545505
CUT CORNERED RECT. MODIFIED BRILLIANT
5.41 CARATS
F
VS 1
62.8%
47.5%
Medium
Pointed
EXCELLENT
EXCELLENT
NONE
(IGI) LG731545505
Comments: This Laboratory Grown Diamond was created by Chemical Vapor Deposition (CVD) growth process. Type IIa

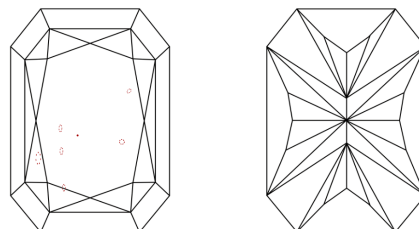


Sample Image Used

PROPORTIONS



CLARITY CHARACTERISTICS



KEY TO SYMBOLS

Red symbols indicate internal characteristics.
Green symbols indicate external characteristics.

COLOR

D E F G H I J Faint Very Light Light

CLARITY

IF	VS ¹⁻²	VS ¹⁻²	SI ¹⁻²	I ¹⁻³
Internally Flawless	Very Very Slightly Included	Very Slightly Included	Slightly Included	Included

